

A person in silhouette is caving in a cave. The person is on the left, looking towards a pool of water in the center. The cave walls are rocky and illuminated by a light source, creating a dramatic scene. The text "Vodna Sled" is written in a large, white, curved font at the top, and "Migovec 2010" is written in a similar font at the bottom.

Vodna Sled

Migovec 2010

**IMPERIAL COLLEGE
CAVING CLUB**

**JAMARSKA SEKCIJA
PD TOLMIN**

Funding:

**Ghar Parau Foundation
Imperial College Union
Imperial College Trust**

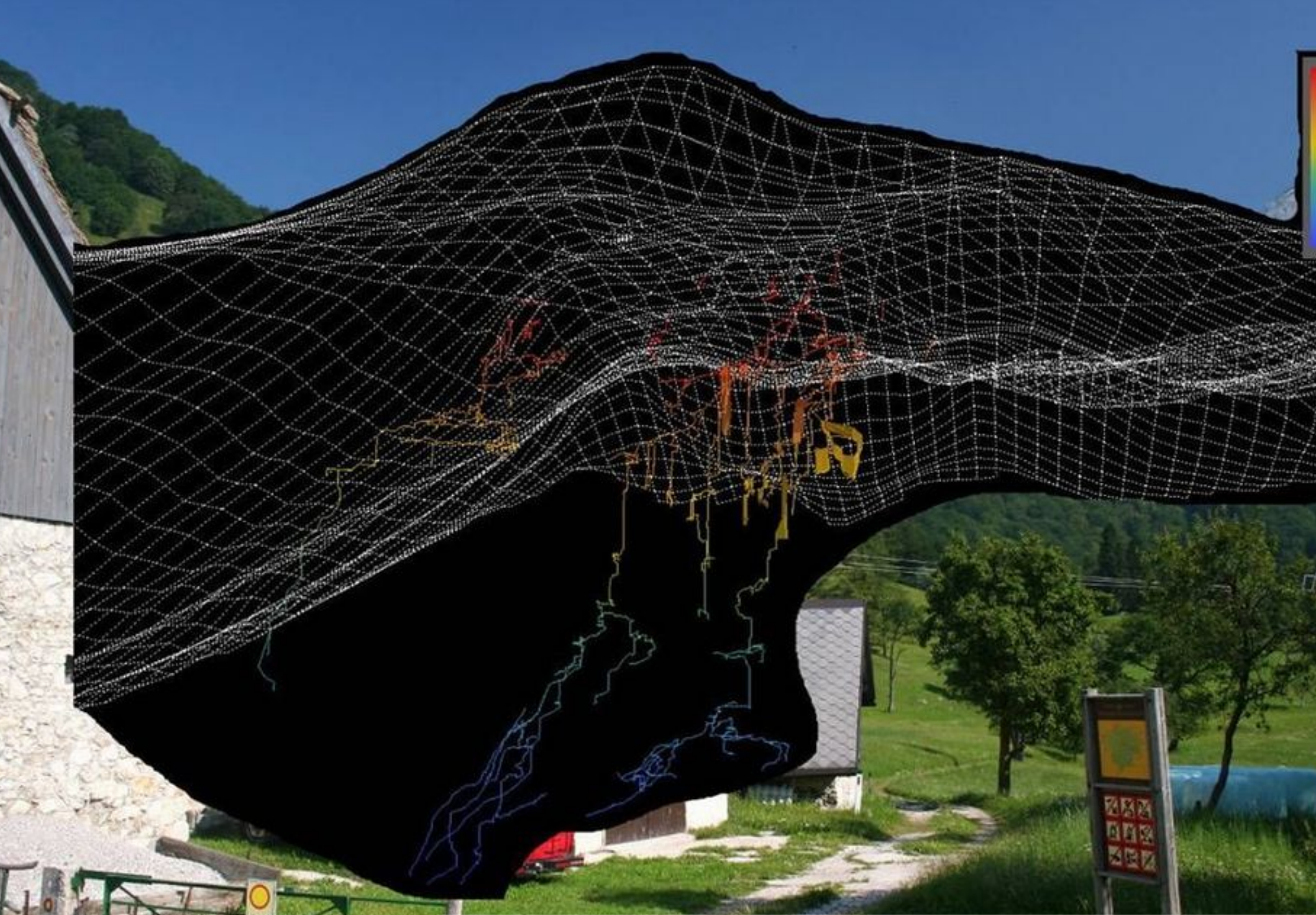
Support:

**Beast Products
Starless River**

Tolminski Migovec

Ravne





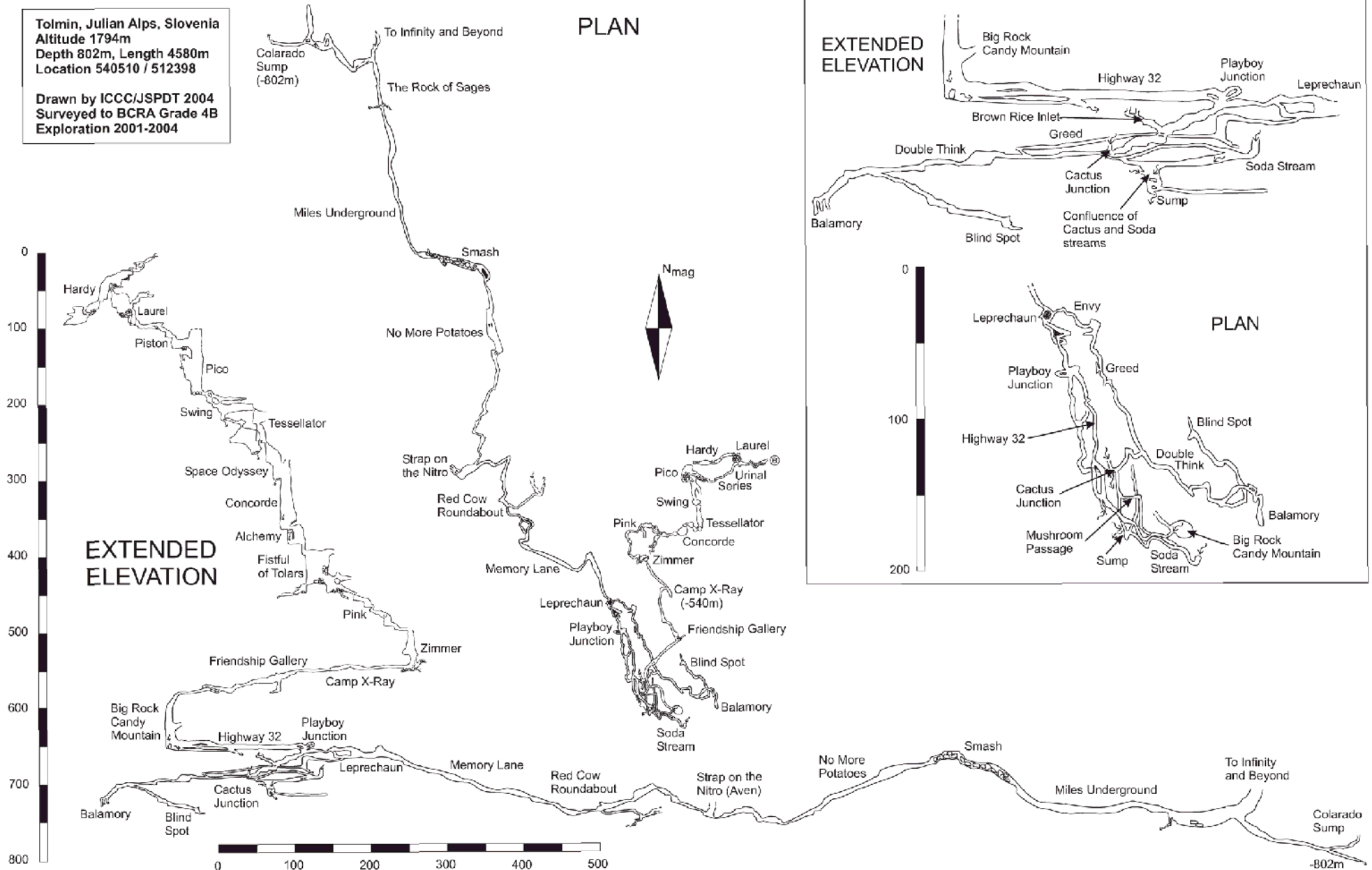
25.63km total cave passage (2010)

2003-2004: horizontal development

Gardeners' World

Tolmin, Julian Alps, Slovenia
 Altitude 1794m
 Depth 802m, Length 4580m
 Location 540510 / 512398

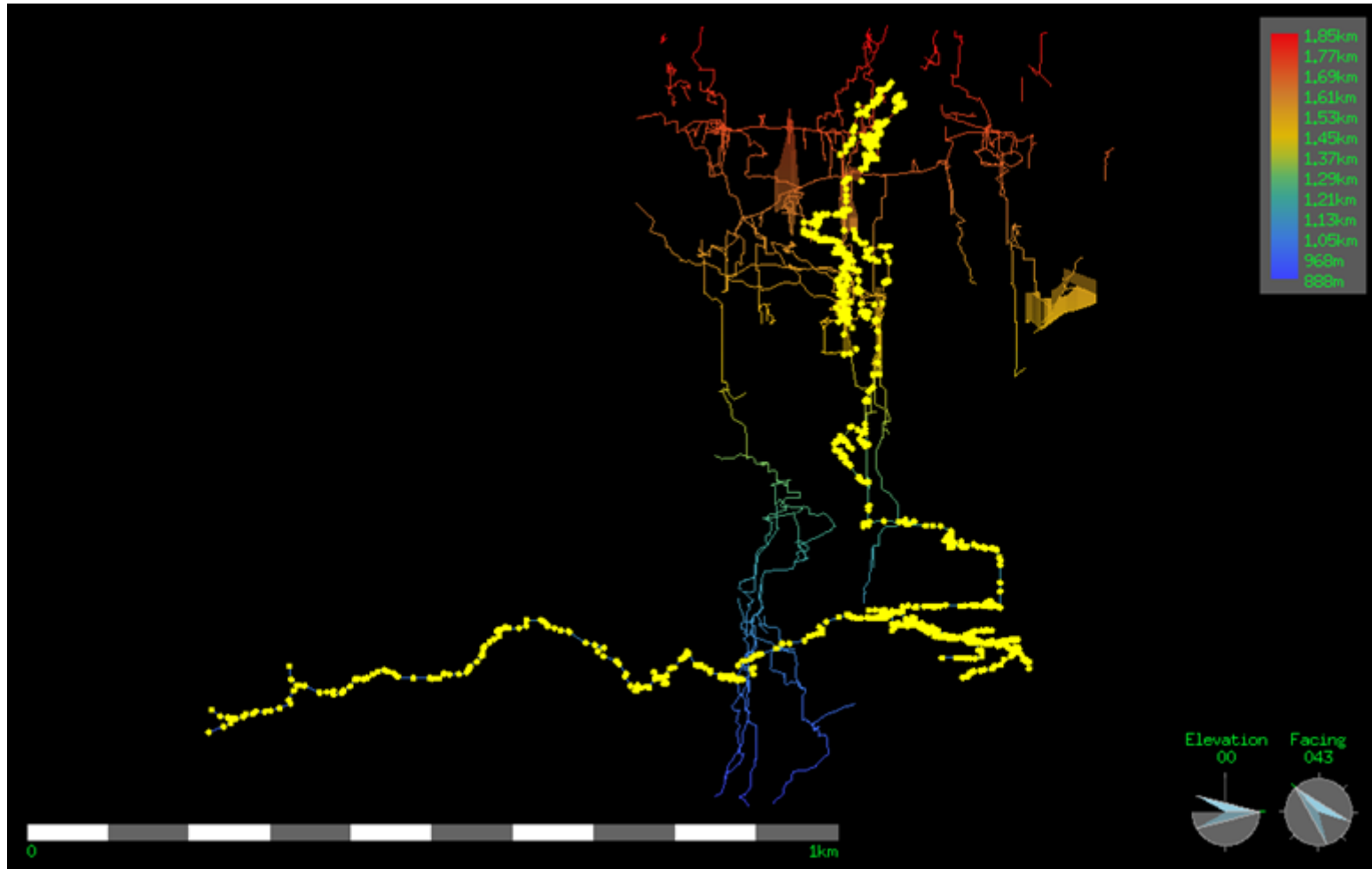
Drawn by ICC/JSPDT 2004
 Surveyed to BCRA Grade 4B
 Exploration 2001-2004



System Vrtnarija (2000-2009)

Depth: 802m (12th Deepest in Slovenia)

Length: 6535m (12th longest in Slovenia)

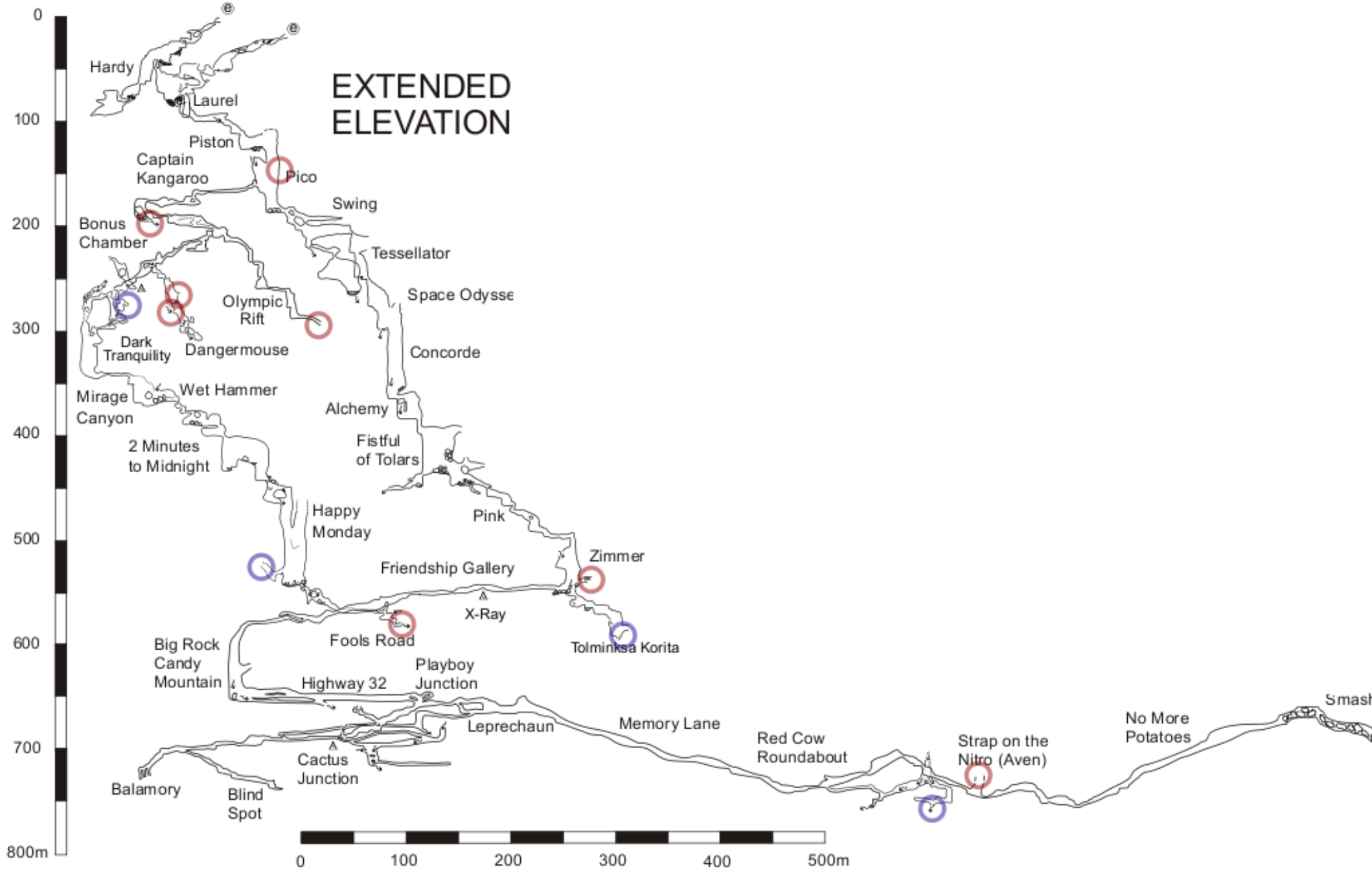


(2009 survey data compared to the March 2009 Kataster list of Longest & Deepest)

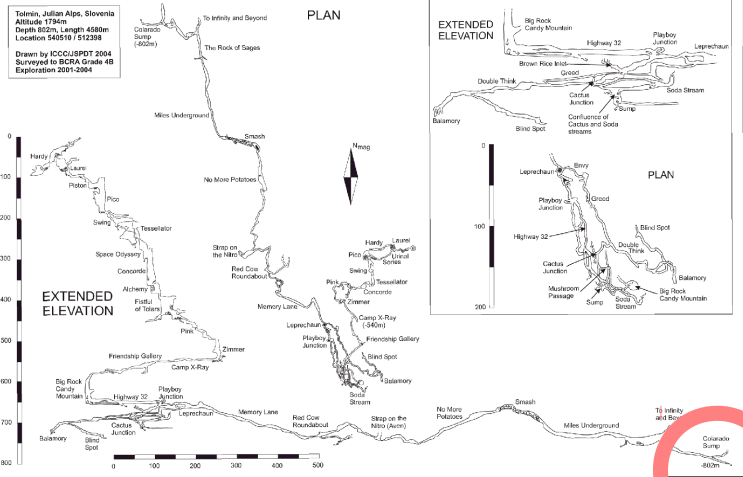
○ Good lead, but requires bolt climbing / widening etc.

○ Wide open & waiting!

EXTENDED ELEVATION



Gardeners' World



Colarado Sump – The End?



Vodna Sled

A person in silhouette is seen from behind, looking into a cave. The cave walls are rocky and textured. In the center of the cave, there is a pool of water that reflects the light. The scene is dimly lit, with light sources creating highlights on the rock surfaces and the water.

Migovec 2010





















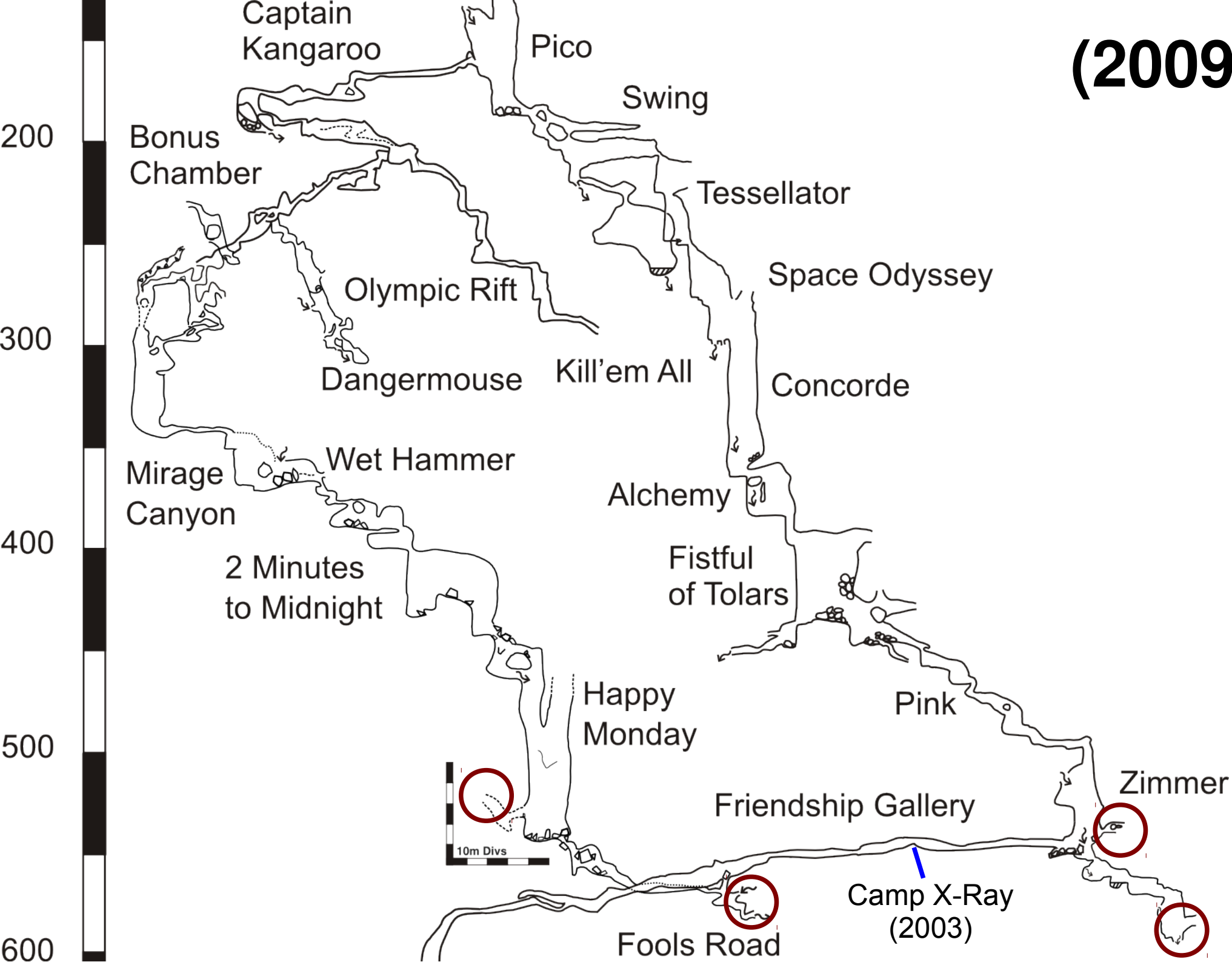








(2009)





2003 Camp X-Ray (-539m)













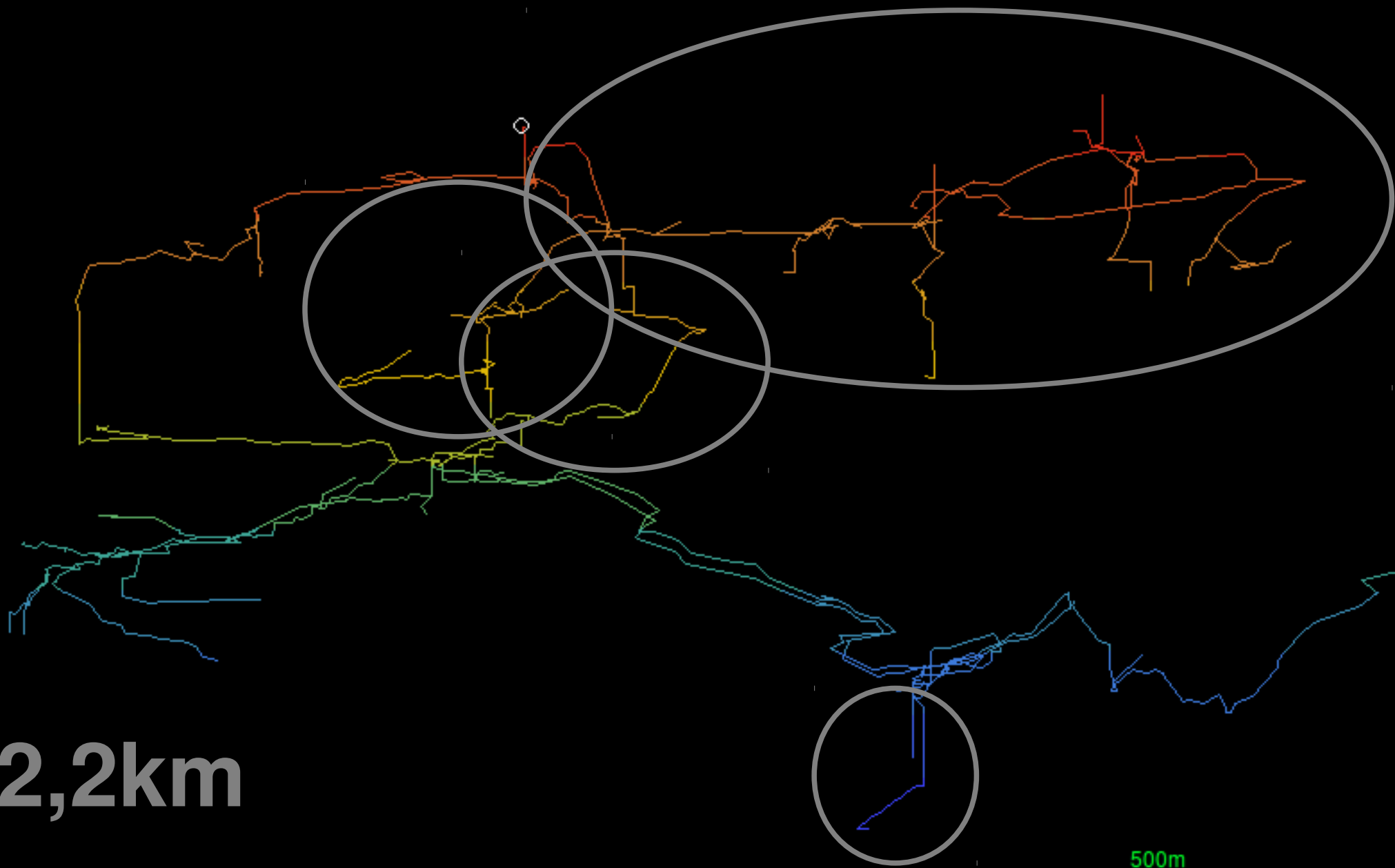


Underground Camp Video



(if it works!)

Vrtnarija Below -500m



2,2km

500m



Zimmer (-543m)

Tolminska Korita





Eggstravaganza (-555m)









Black Knight



**Black Knight
Siphon**





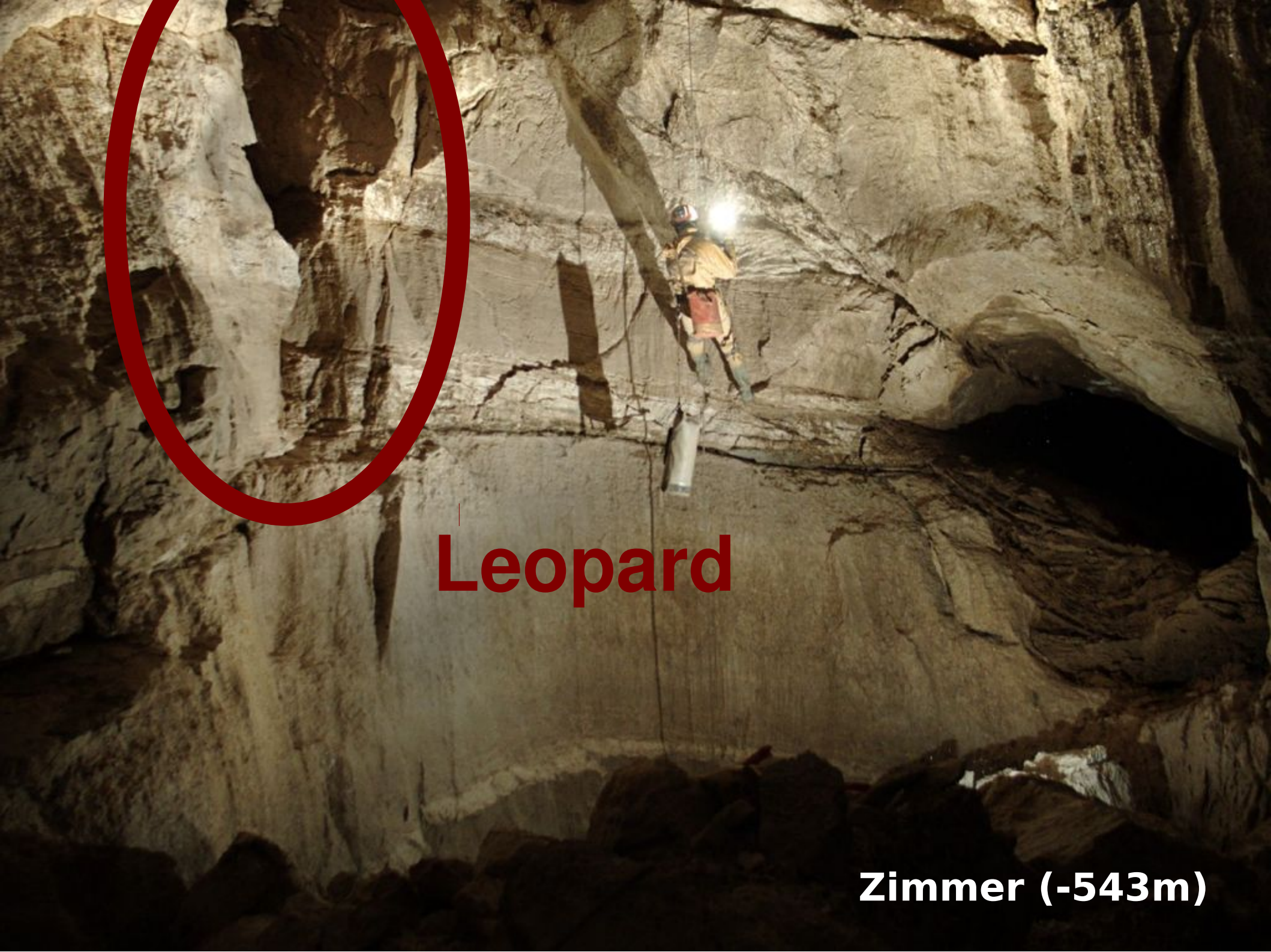


Connection to Envy

**(Sidewinder,
The Crack in Time)**

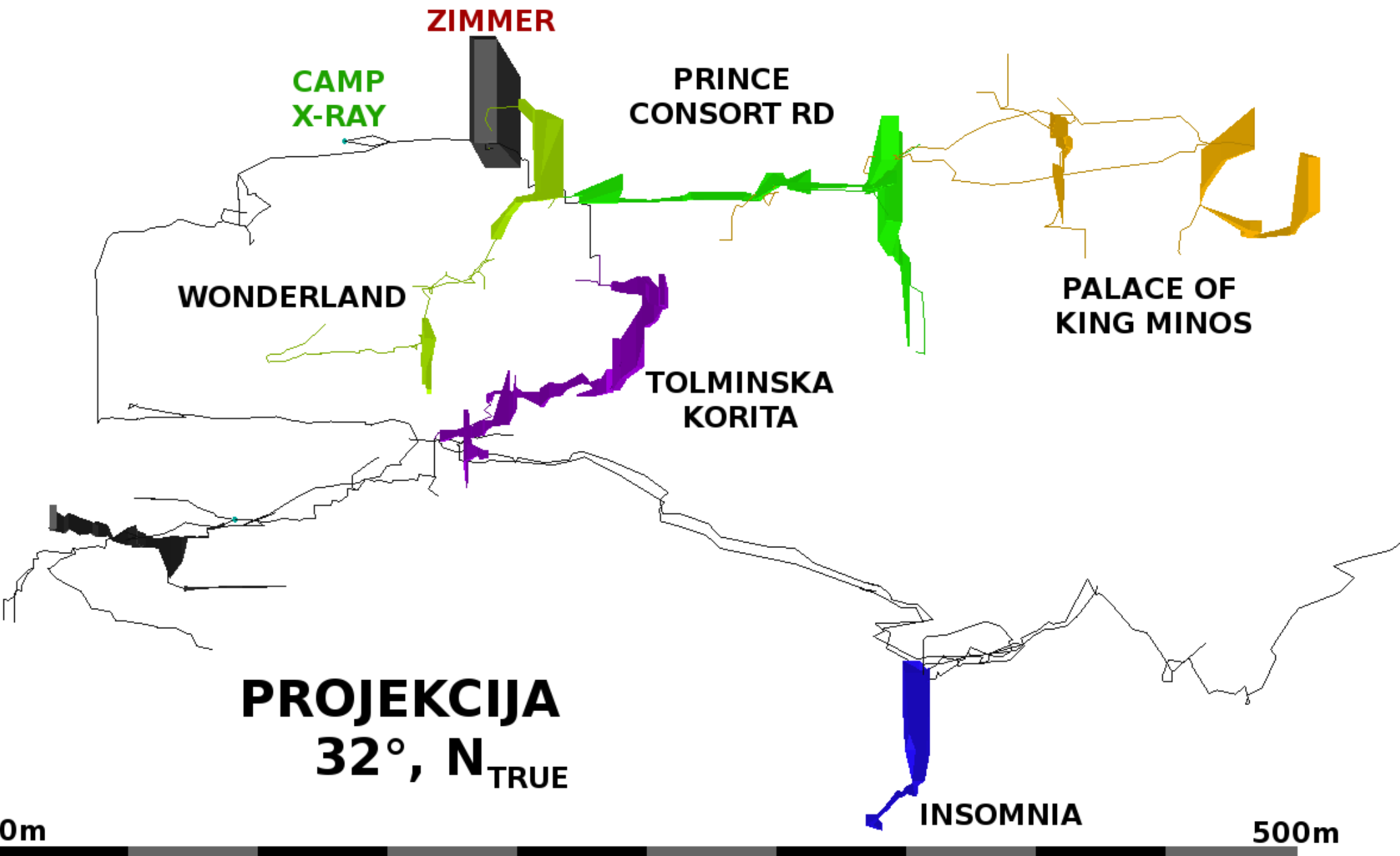






Leopard

Zimmer (-543m)















(Nikolas Kral)



(Nikolas Kral)



Prince Consort Rd



The Albert Hall

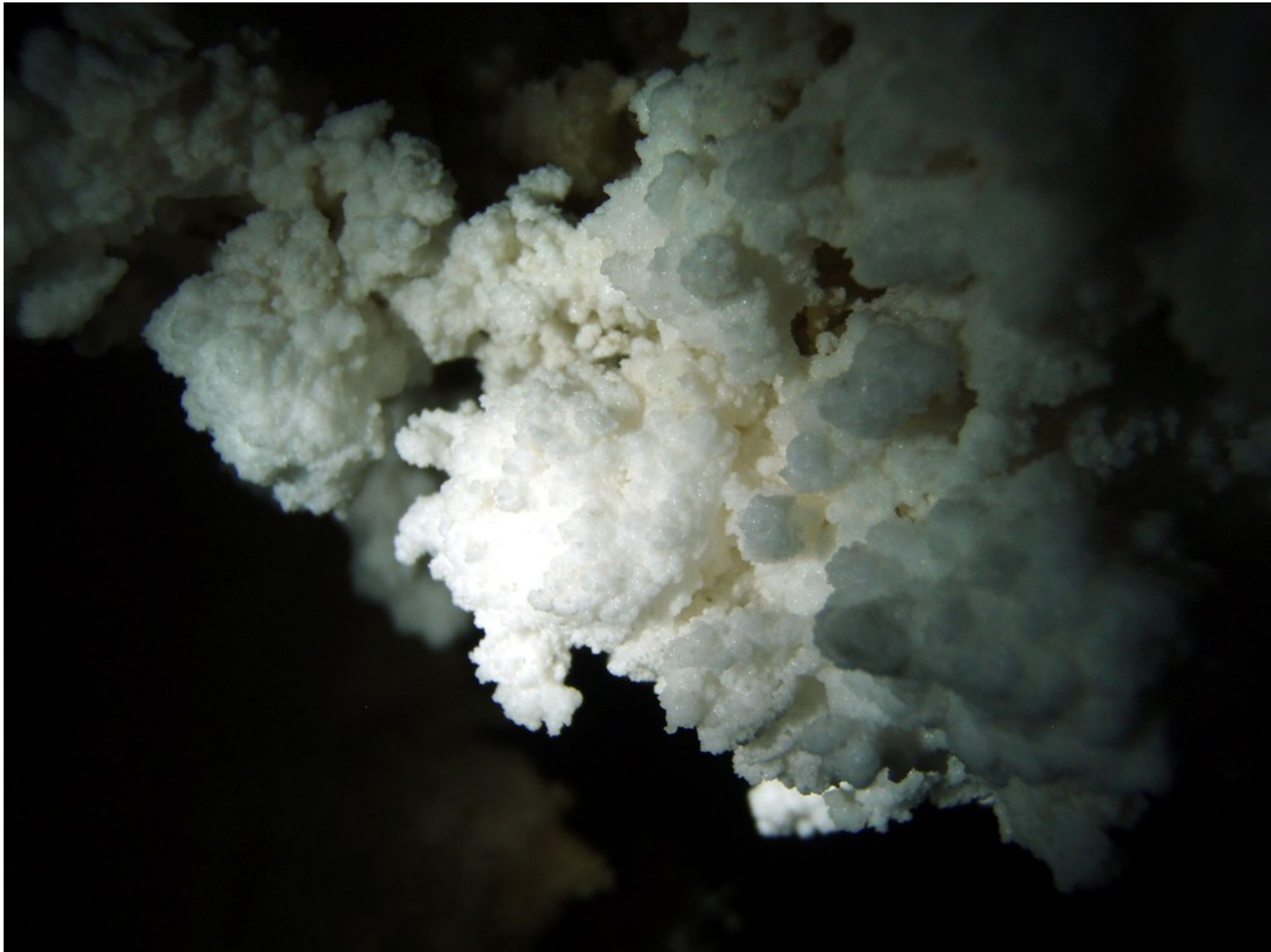








The Palace of King Minos

























**Minotaur
Rift**













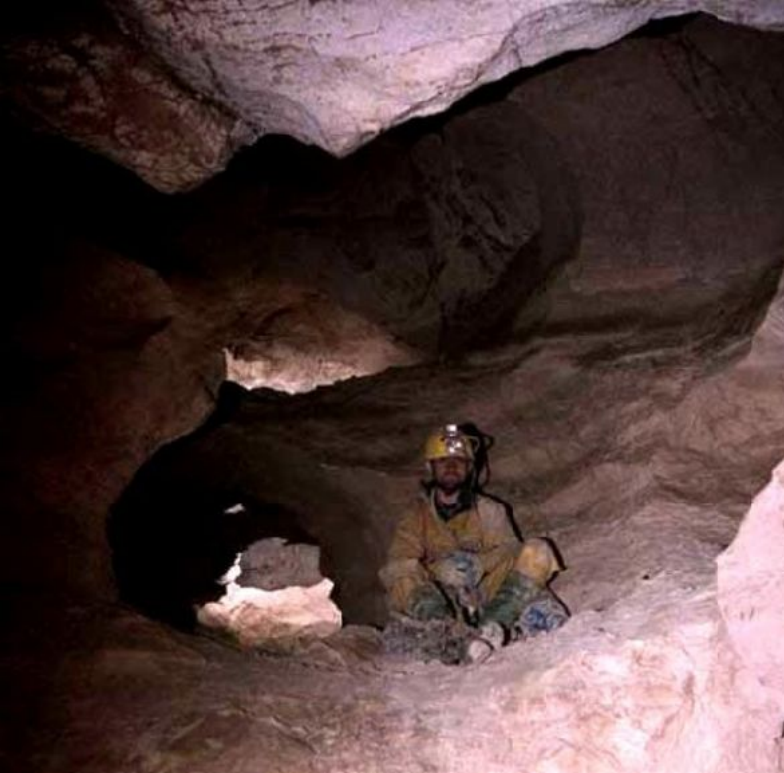








The Queen's Bed Chamber

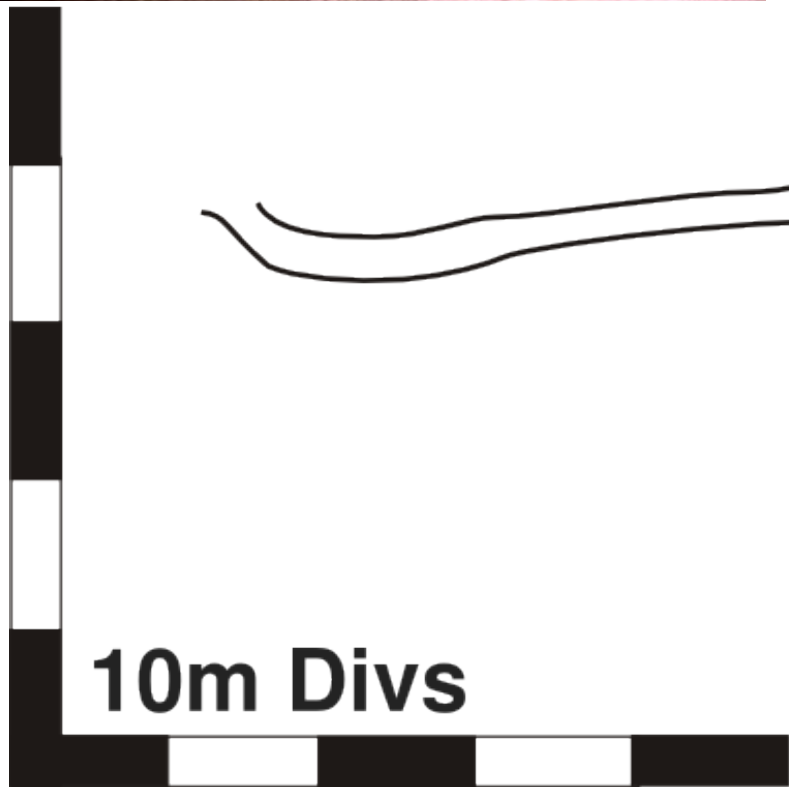


2009: 'Republica Palma de Coco'

2010: 'Insomnia'

58m vertical extension

(4m more needed to be deepest part of cave)

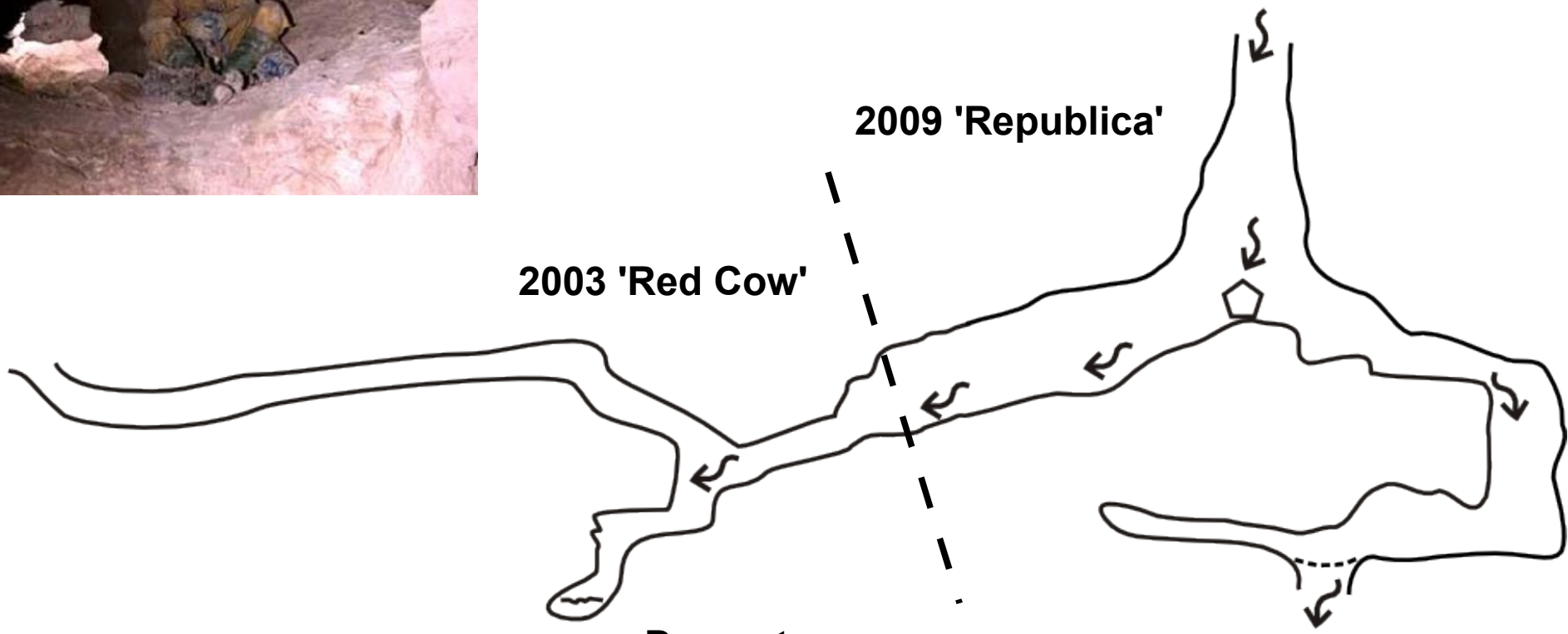


2003 'Red Cow'

2009 'Republica'

**Downstream
Sump (perched)**

**Can see 30-odd
metres down
rift + cascades**

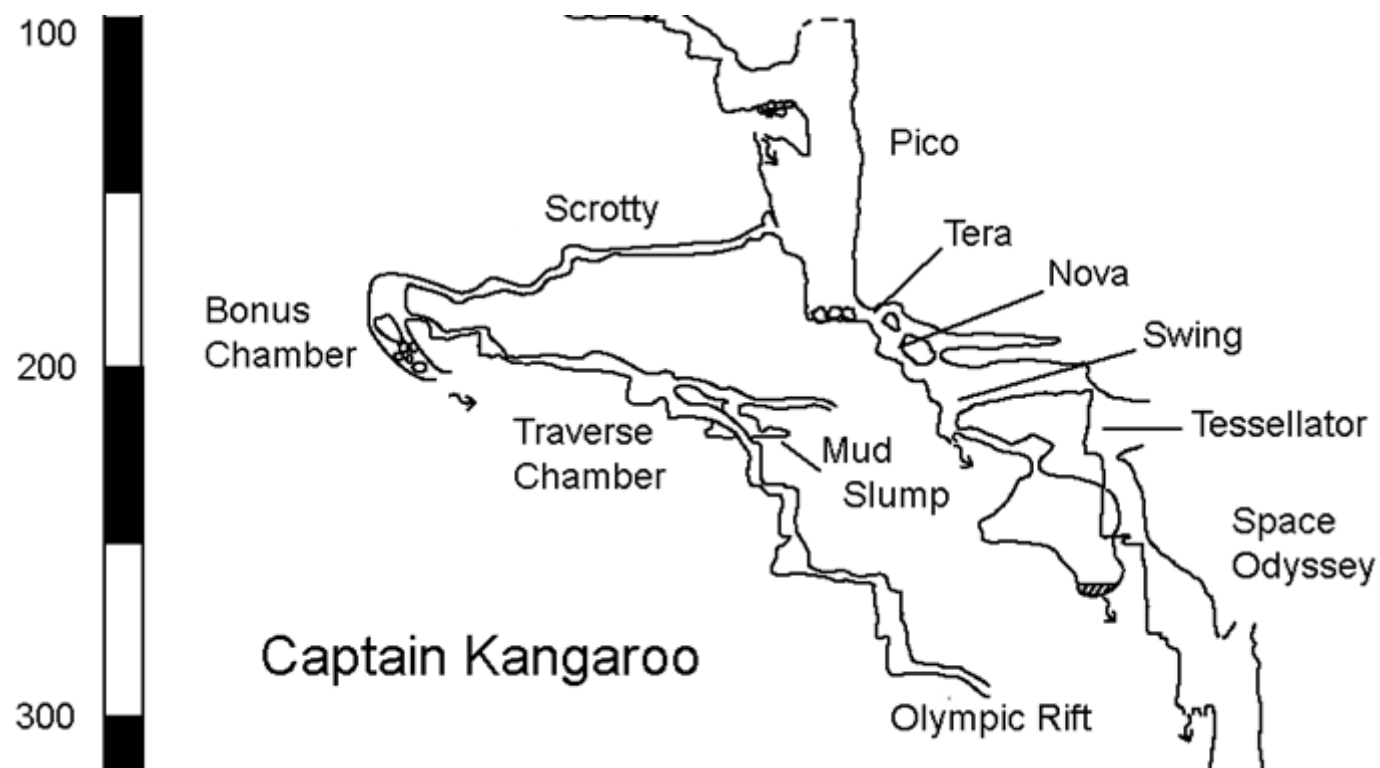


2005-2008

Possible connection?

Vrtnarija → Kavkna Jama (M2)

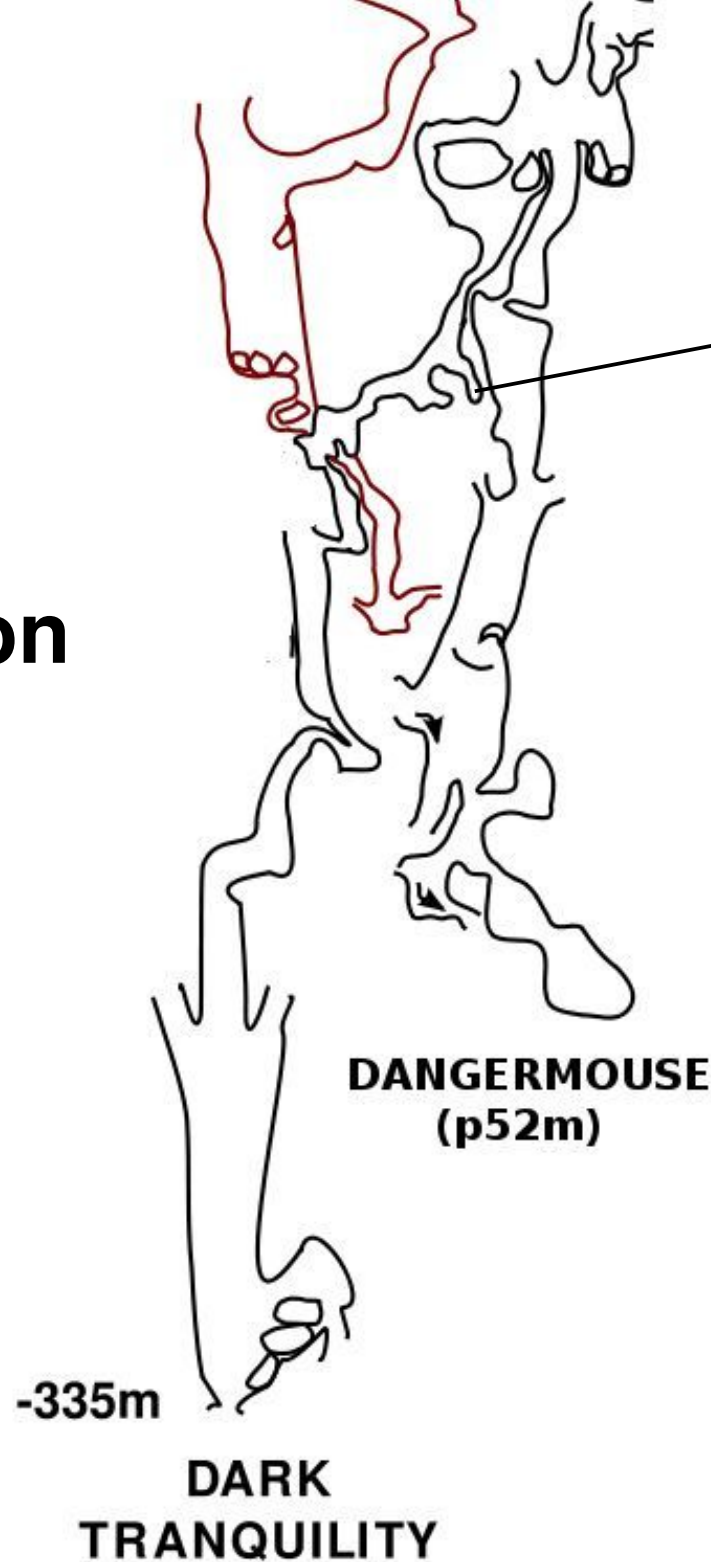
Sistem Migovec would become 2nd longest in Slovenia.



M2 (RED)

**Less than
50m Separation**

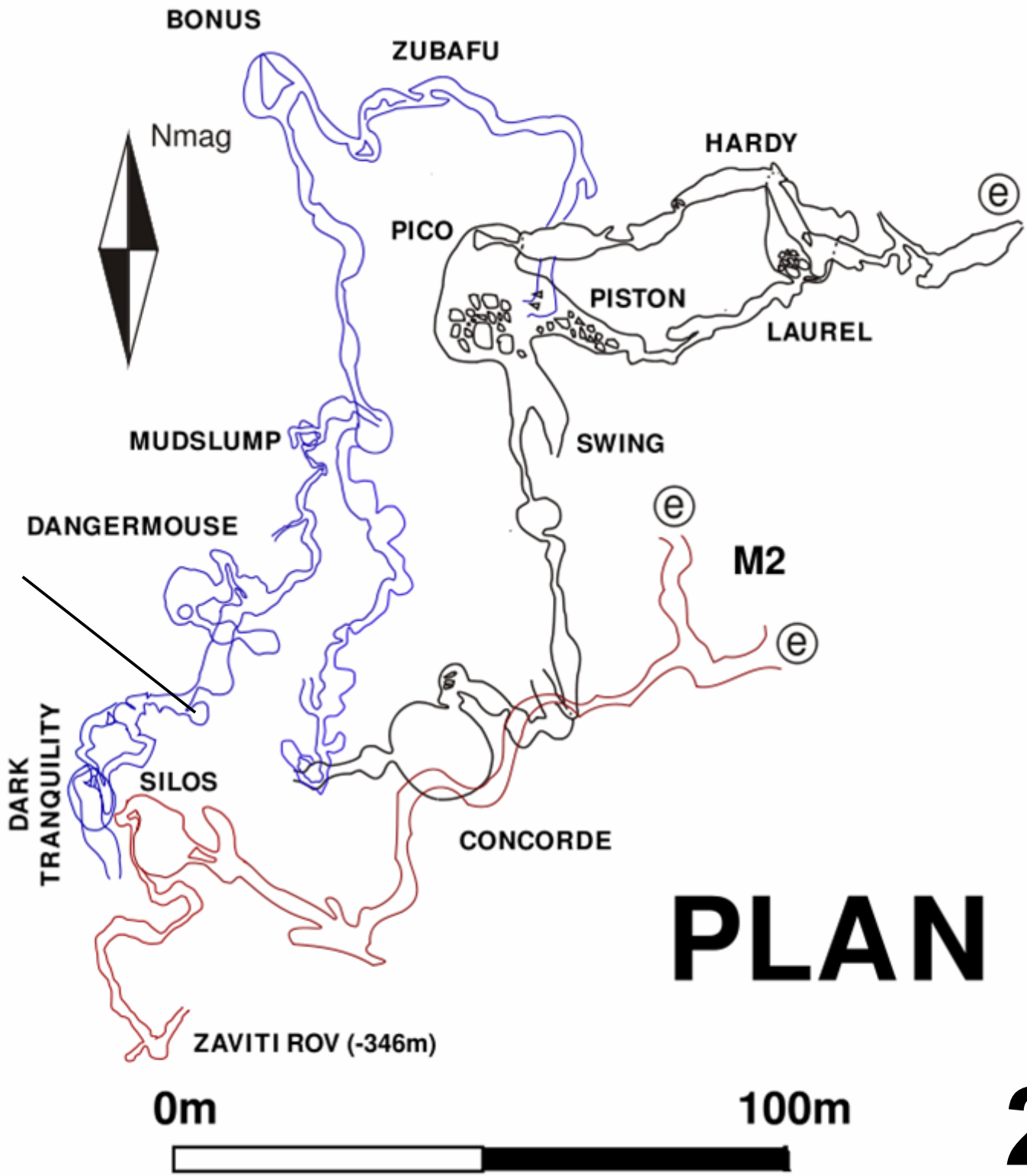
**Metal Camp
(2009)**



**Captain
Kangaroo
(Vrtnarija)**

2008

**Metal Camp
(2009)**



PLAN

2008







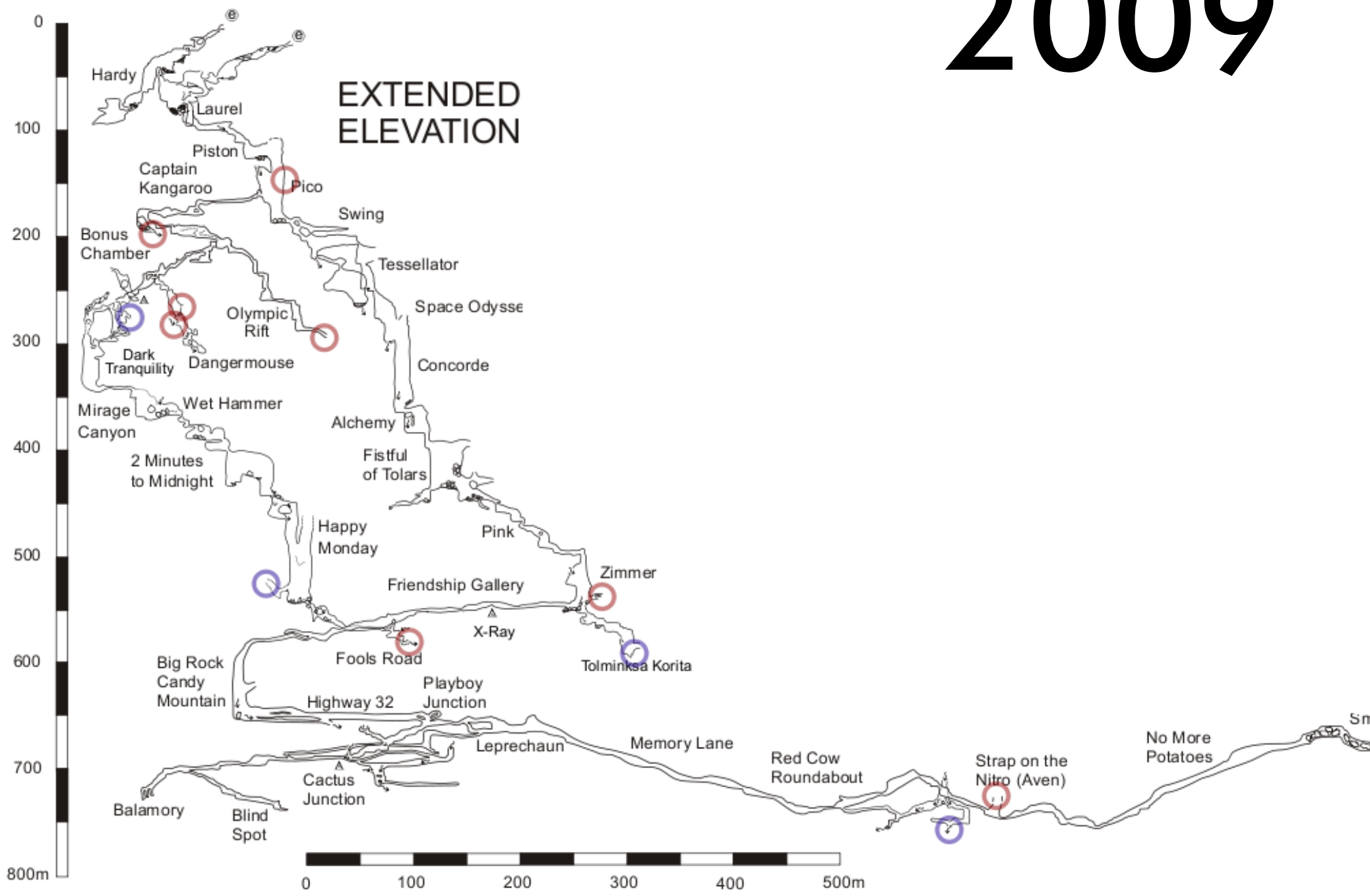






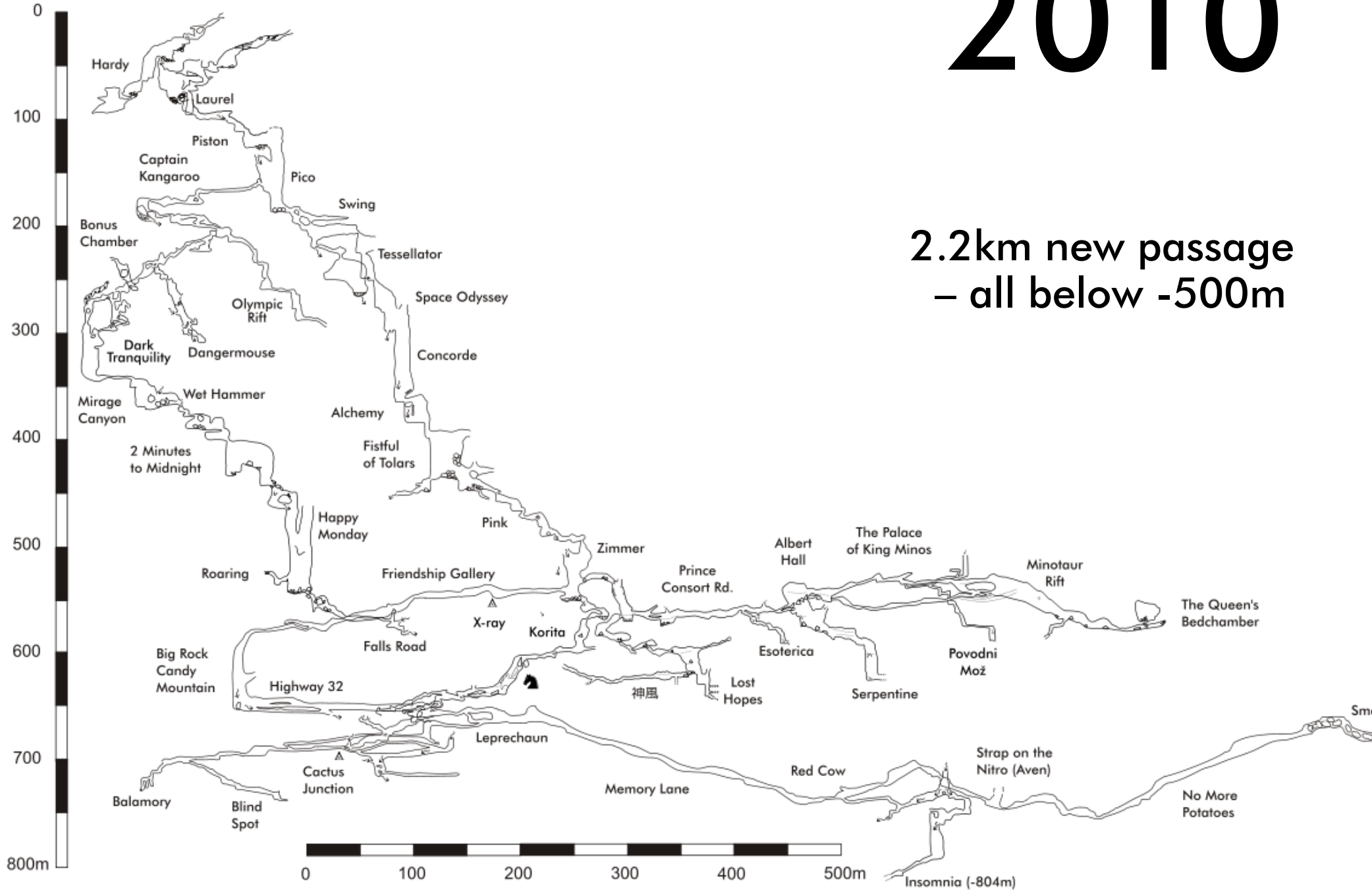
- Good lead, but requires bolt climbing / widening etc.
- Wide open & waiting!

2009



2010

2.2km new passage
– all below -500m



Speleo Statistics

System Vrtnarija

8.775km – 7th longest

807m – 12th deepest

2010: 2.2km found,
All below -500m

System Migovec

11.300km – 5th longest

970m – 7th deepest

Combined

Length: 20.075km

Depth: 970m

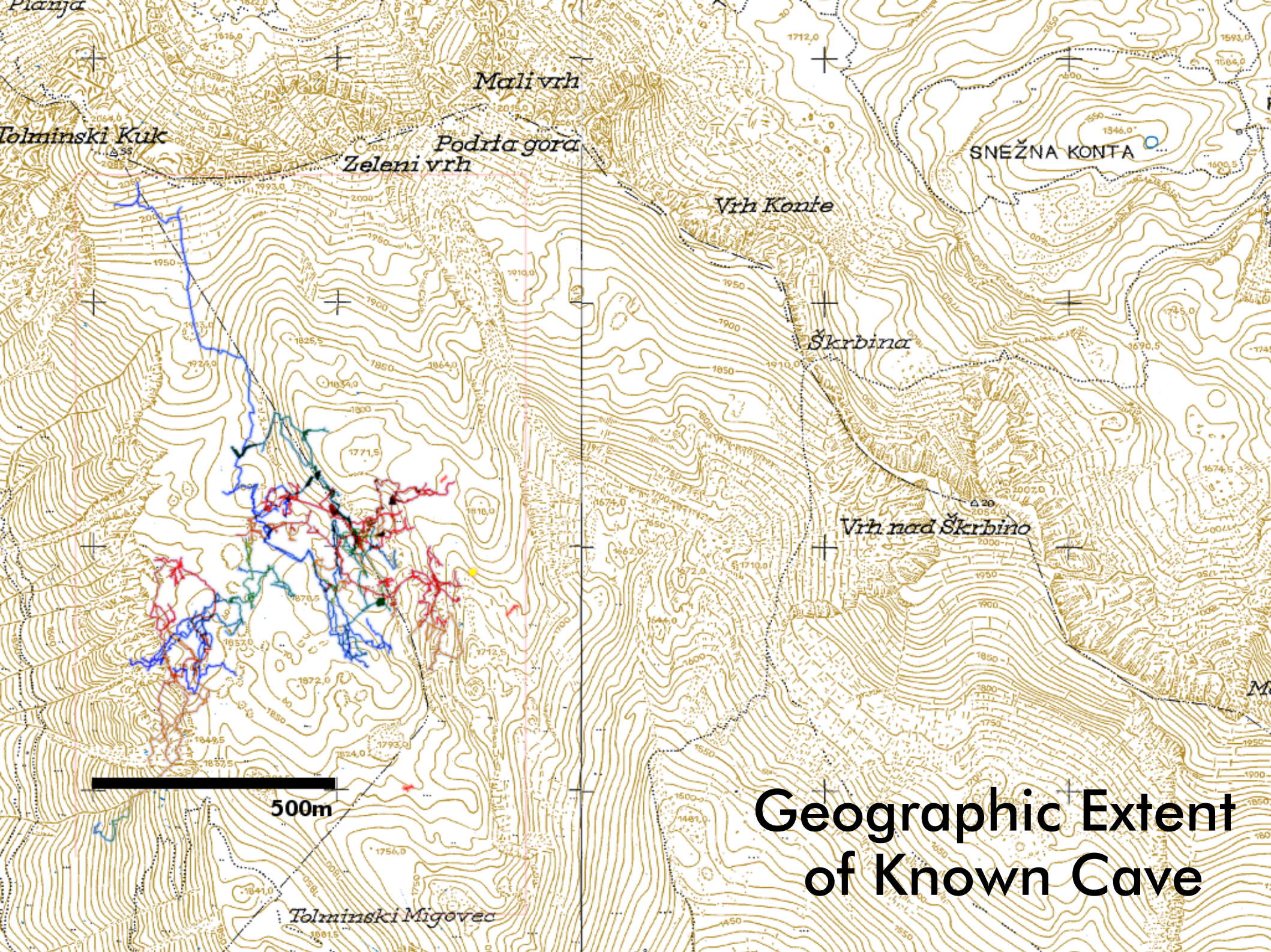
The connection & an extra 495m passage, and System Mig/Vrtnarija becomes longest cave system in Slovenia.

Also the reawakened potential for -1000m.
(M2 entrance in System Migovec lie higher than Vrtnarija, Vrtnarija still has ~200m extra depth potential)

* vs. March 2010 Karst Institute Longest + Deepest List

Postojnska Jama (System)

Length: 20.570km



Mali vrh

Tolminski Kuk

Podria gora
Zeleni vrh

SNEŽNA KONTA

Vrh Konče

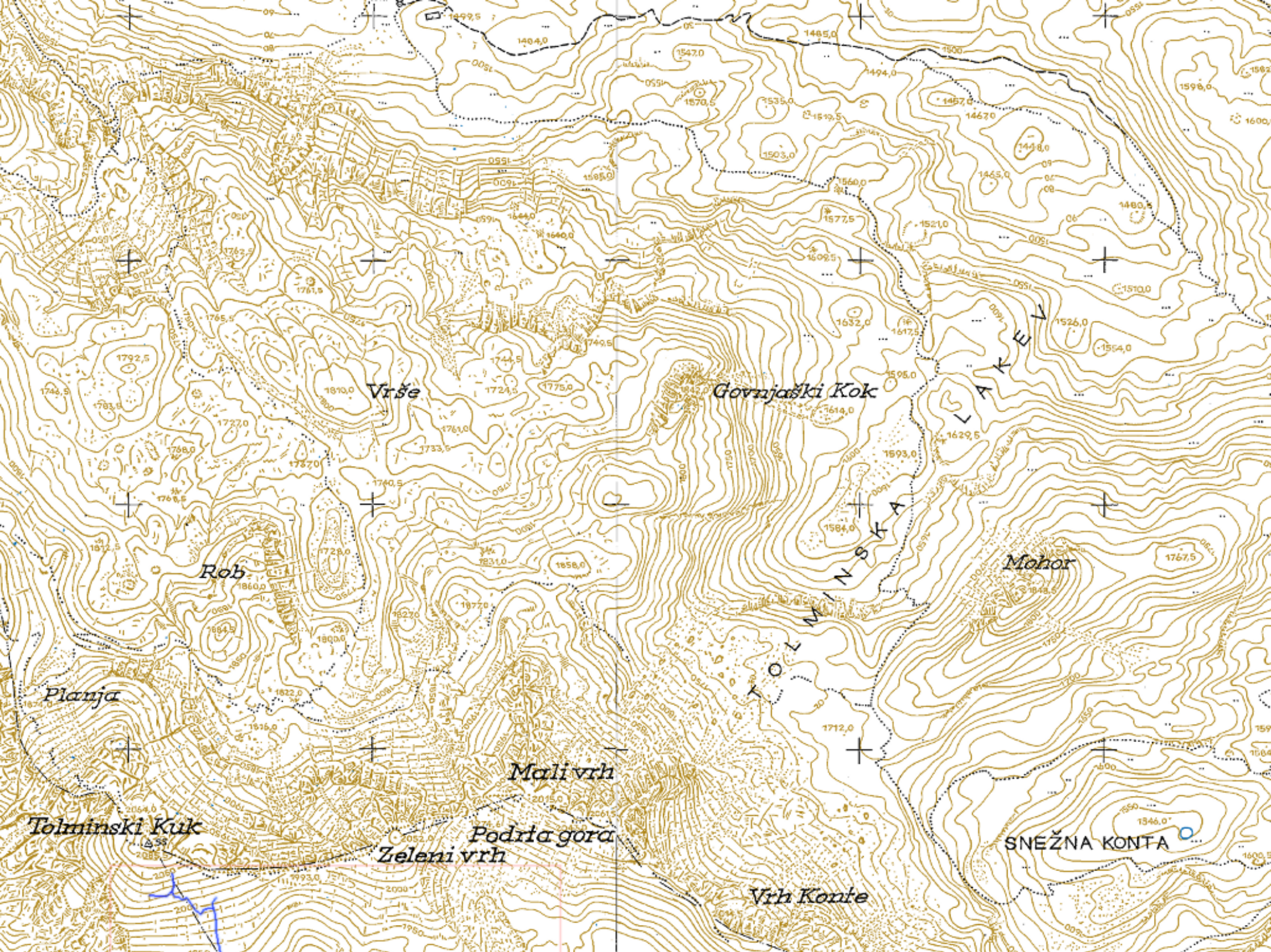
Škrbina

Vrh nad Škrbino

500m

Tolminski Migovec

**Geographic Extent
of Known Cave**



Vrše

Govnjaški Kok

Rob

Mohor

Planja

Mali vrh

Podria gora

Zeleni vrh

Tolminski Kuk

Vrh Konte

SNEŽNA KONTA

KOLMINSKA

LAKUN

LAKEUN















2011

'Plenty of Room at the Bottom'

4 Bed Camp @ X-ray

Continue pushing down:

- * Esoterica
- * Serpentine
- * Insomnia

Continue pushing along:

- * Kamikaze

Digs / 'persuasion':

- * Roaring
- * Ballamory

Climbs:

- * Queen's Bedchamber
- * Strap on the Nitro

From the Surface

Digs / 'persuasion':

- * M2 till connection (!)

Captain Kangaroo last leads

Area N

East-Pole little caves

Many thanks to:

JSPDT & PDT

Family Skalar in Ravne



Photo Credits:

Jana Čarga

Iztok Mozir 'Izi'

Nikolas Kral

Martin McGowan

Jarvist Moore Frost

Jan Evetts

