

A person is shown in silhouette, crouching in a cave. The cave walls are illuminated, and a pool of water is visible in the background. The text "Vodna Sled" is written in a large, white, curved font across the top of the image.

Vodna Sled

Migovec 2010

**IMPERIAL COLLEGE
CAVING CLUB**

**JAMARSKA SEKCIJA
PD TOLMIN**

Funding:

**Ghar Parau Foundation
Imperial College Union
Imperial College Trust**

Support:

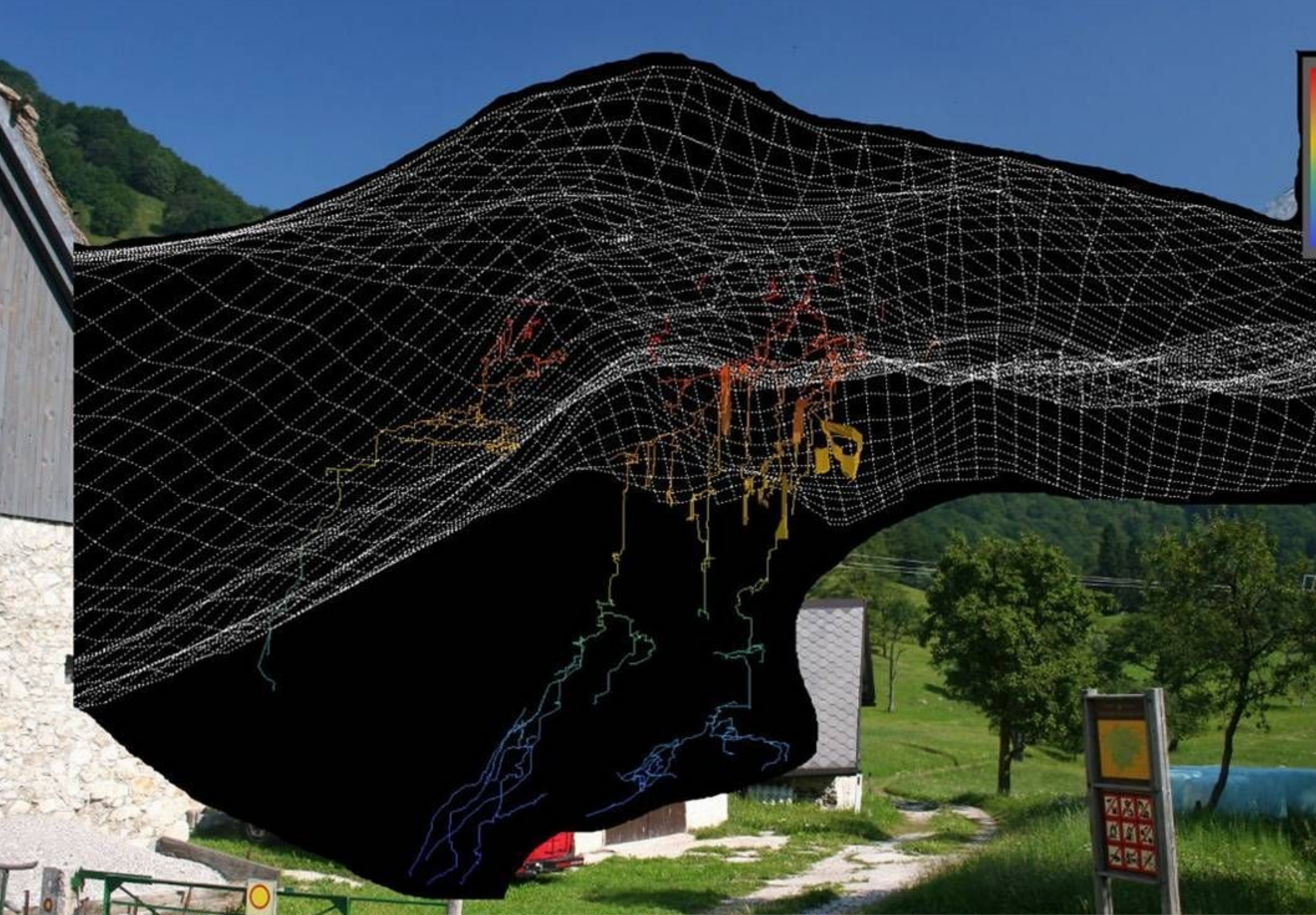
**Beast Products
Starless River**

Tolminski Migovec

Ravne



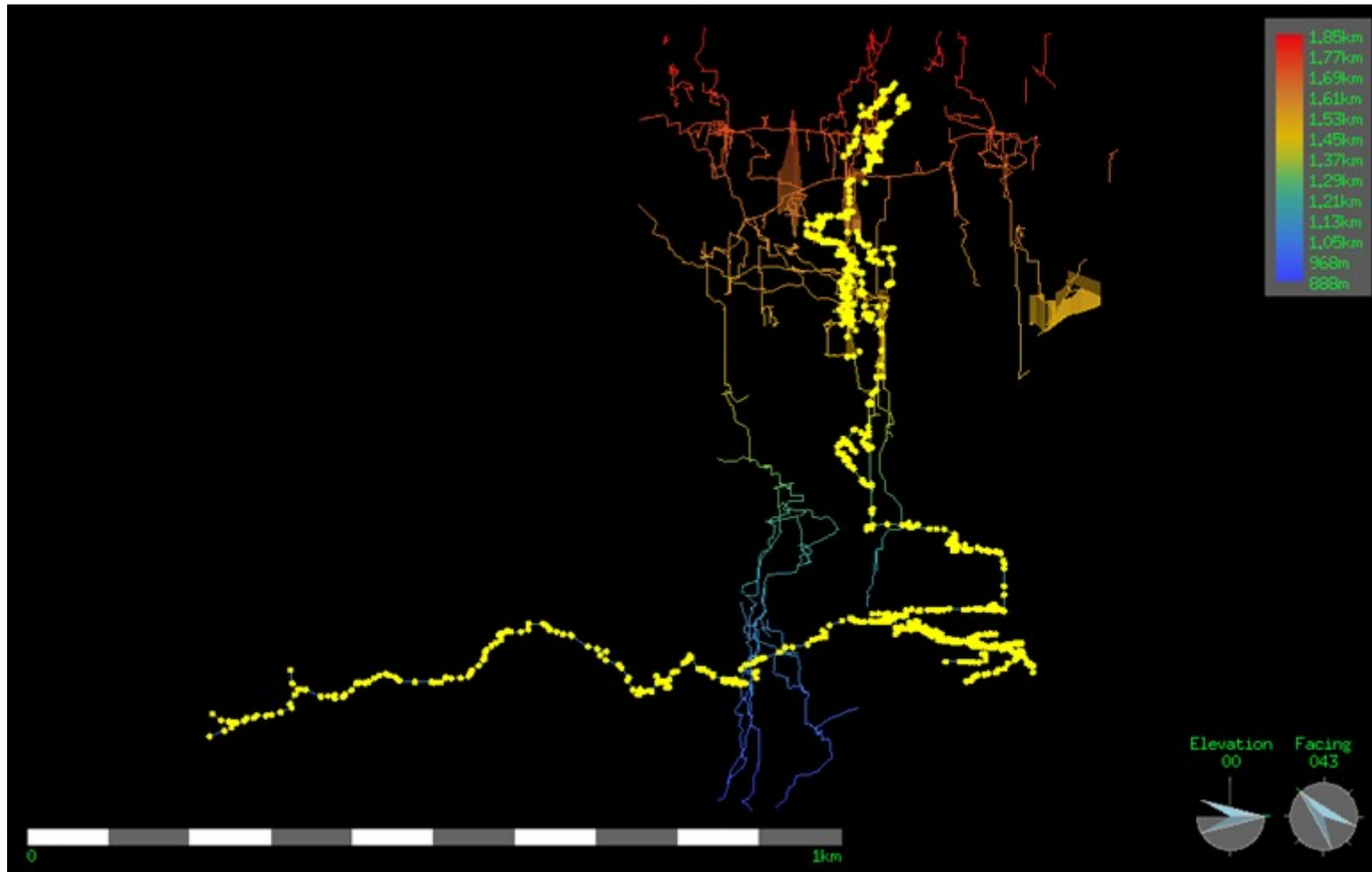




25.63km total cave passage (2010)

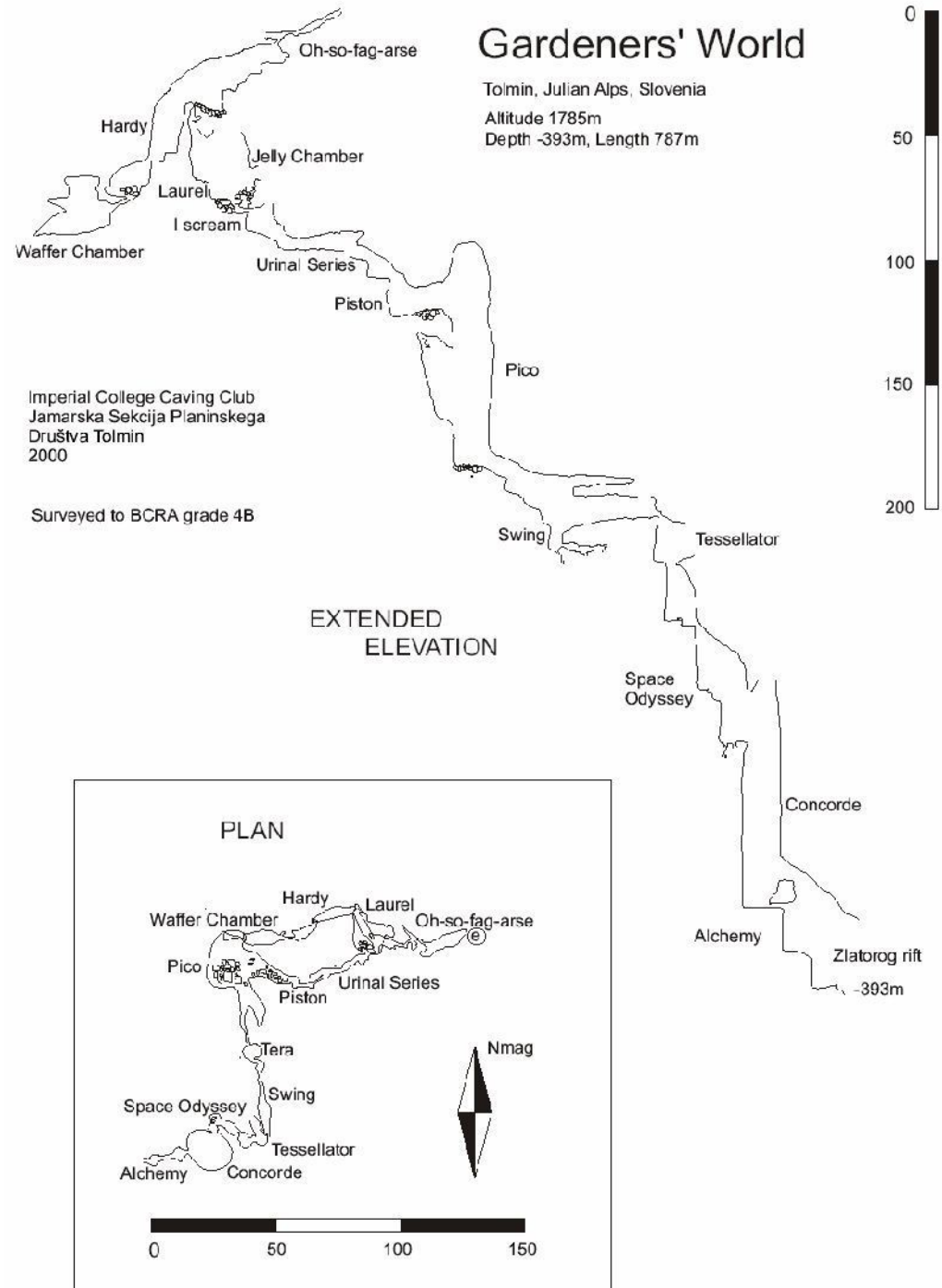
Sistem Vrtnarija (2000-2009)

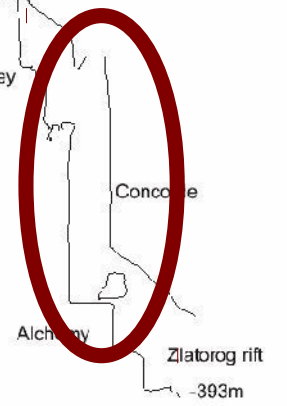
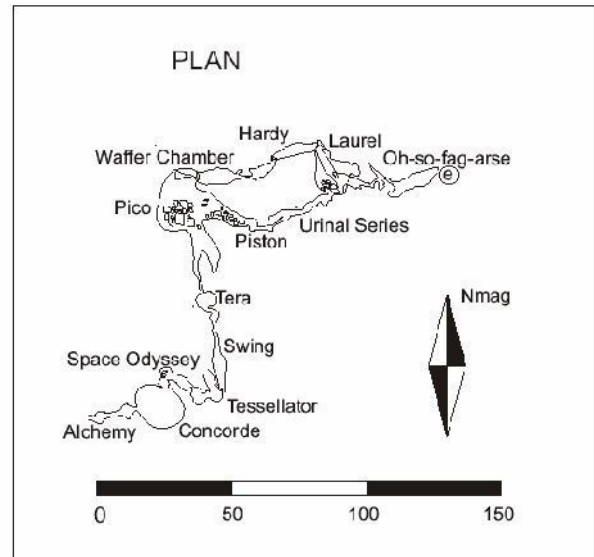
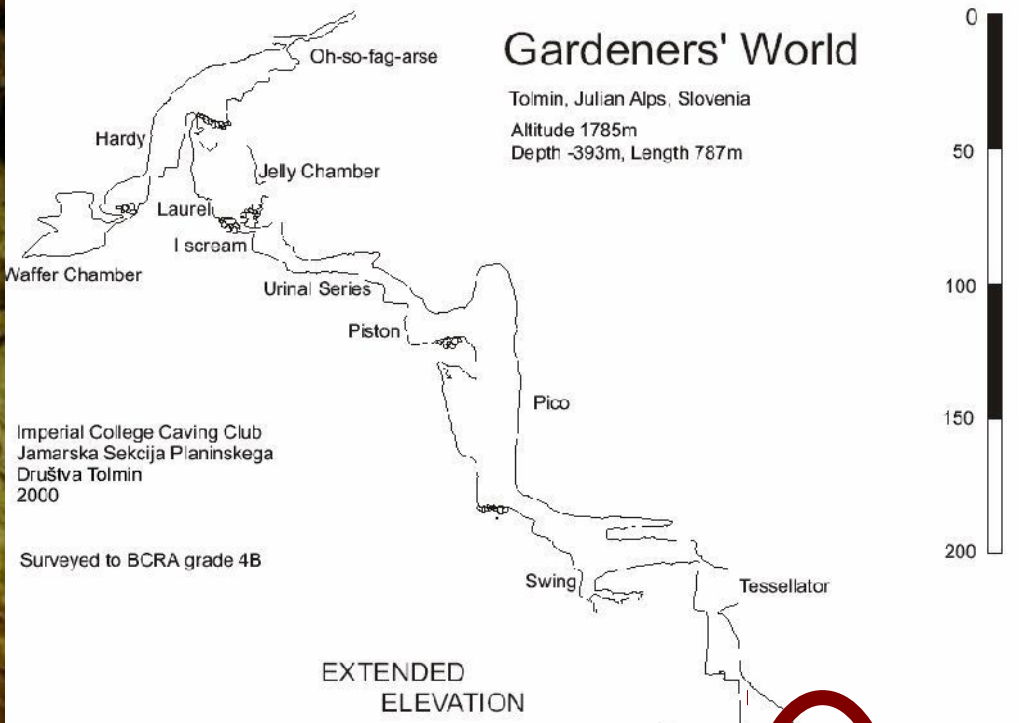
Depth: 802 m (12th Deepest in Slovenia)
Length: 6535m (12th longest in Slovenia)



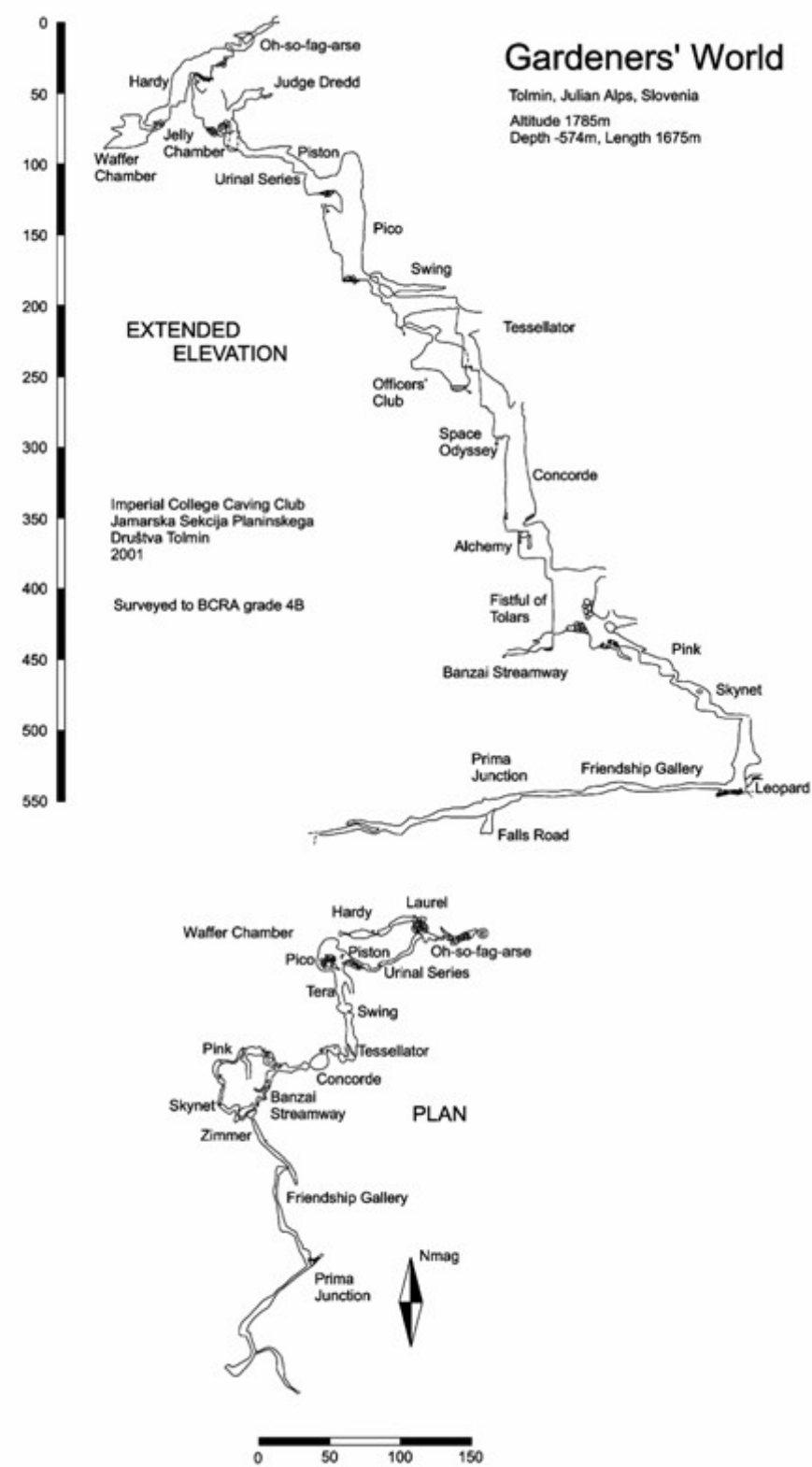
2009 survey data compared to the March 2009 Kataster list of Longest & Deepest)

2000 Vrtnarija





2001: Vrtnarija



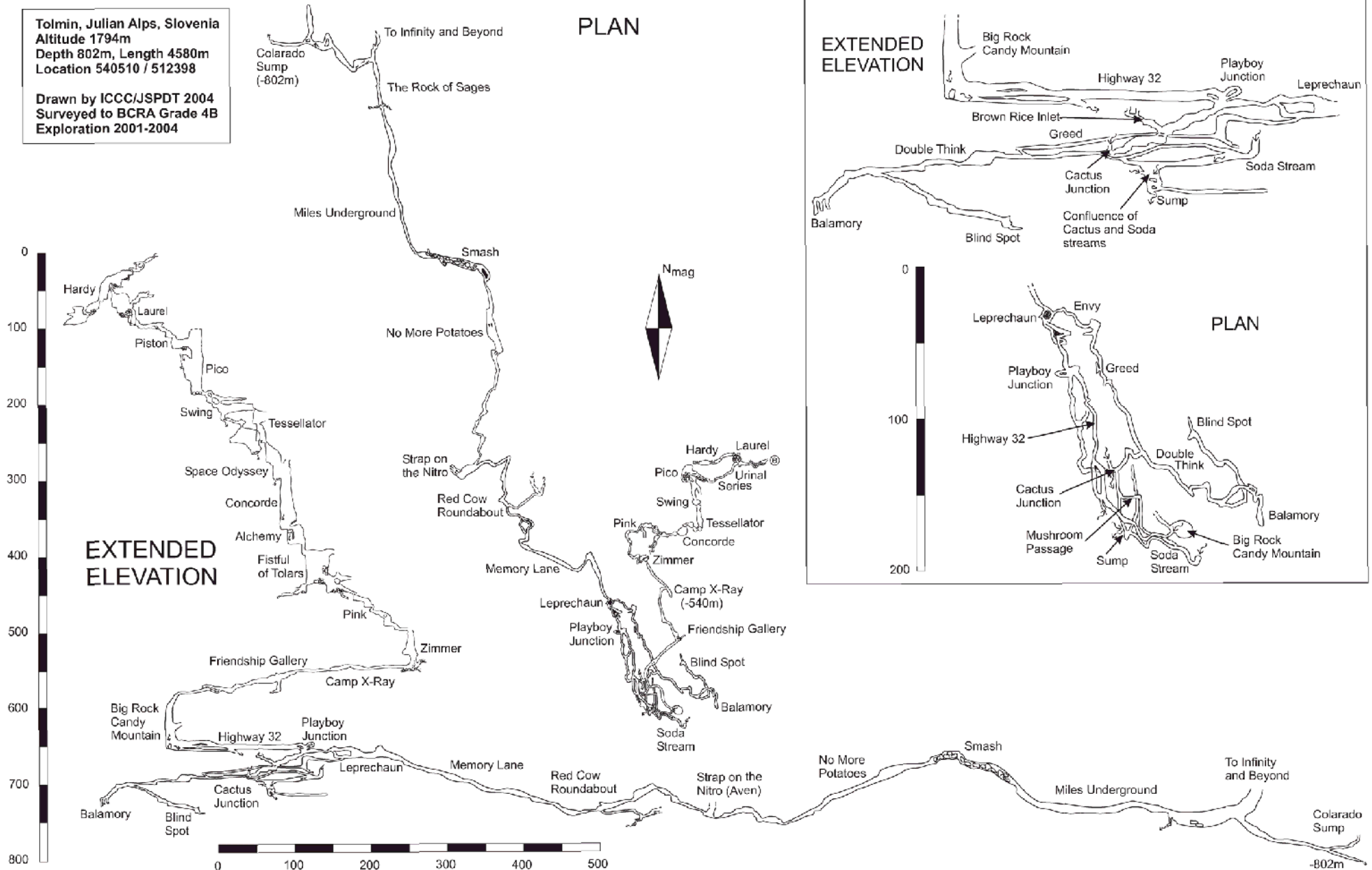


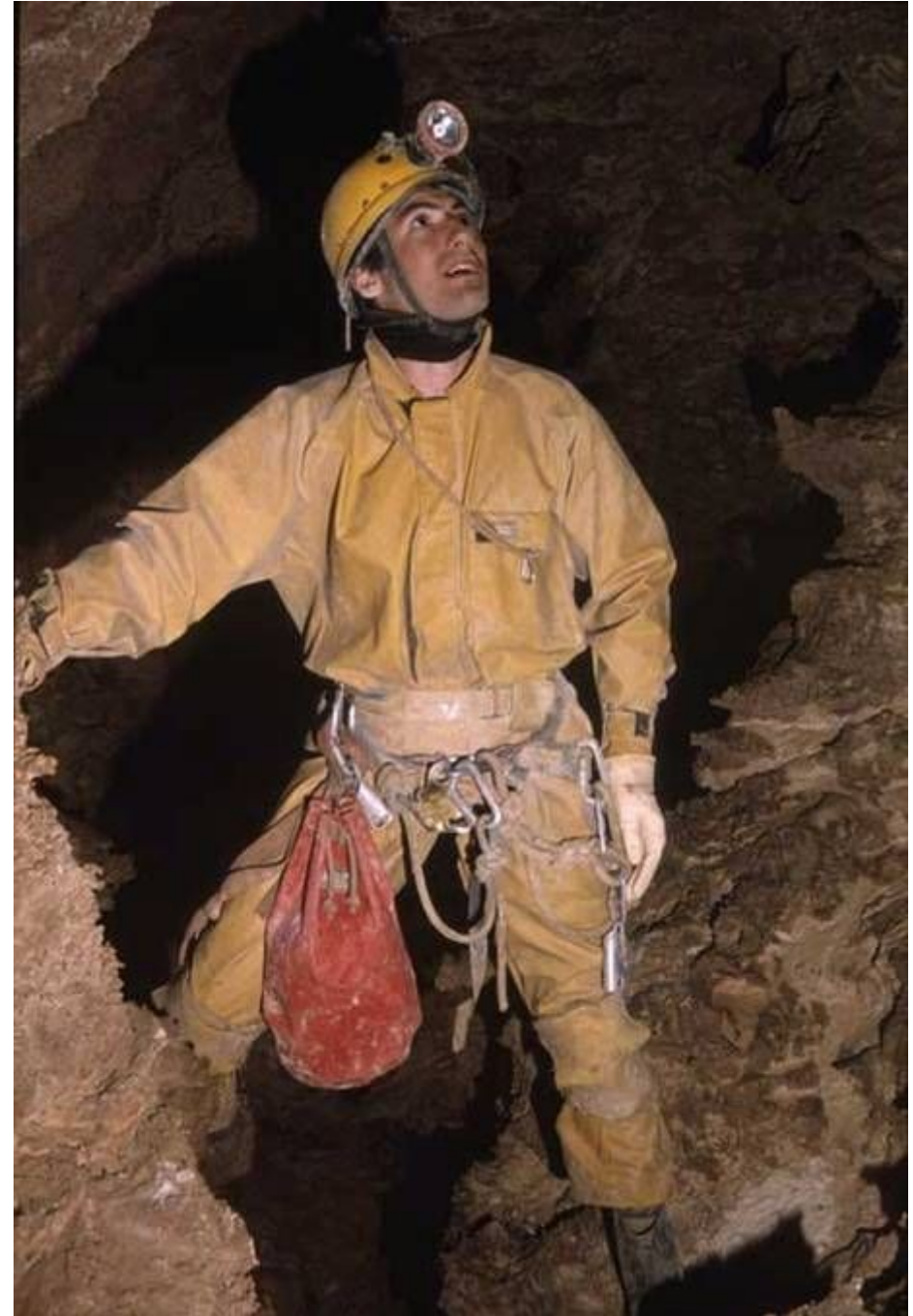
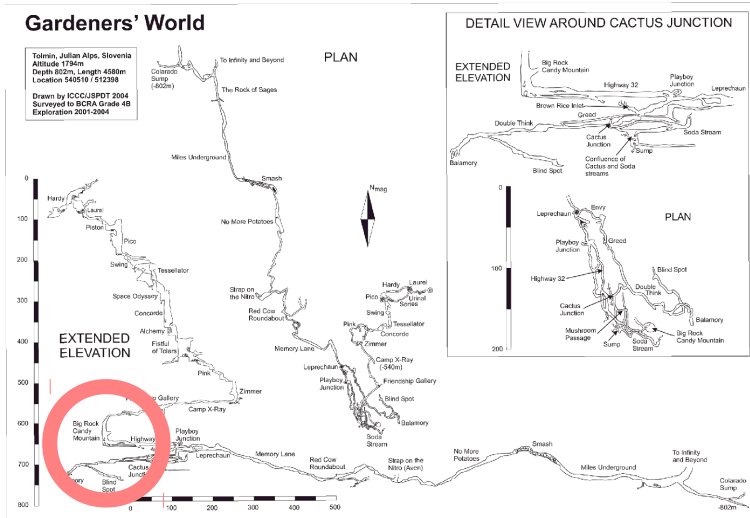
2003-2004: horizontal development

Gardeners' World

Tolmin, Julian Alps, Slovenia
 Altitude 1794m
 Depth 802m, Length 4580m
 Location 540510 / 512398

Drawn by ICC/JSPDT 2004
 Surveyed to BCRA Grade 4B
 Exploration 2001-2004

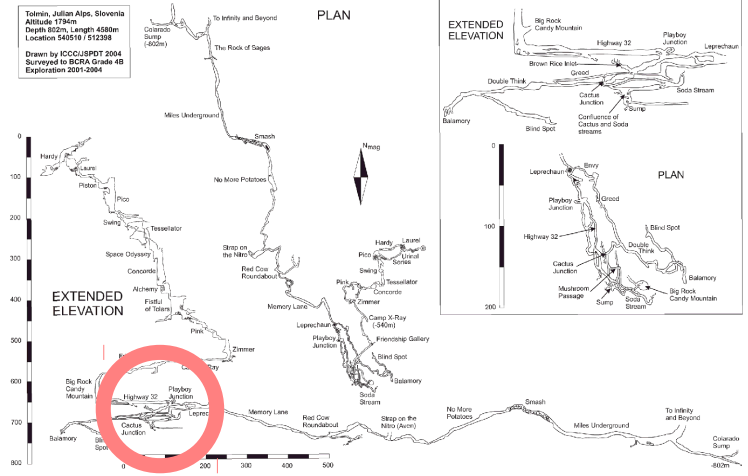


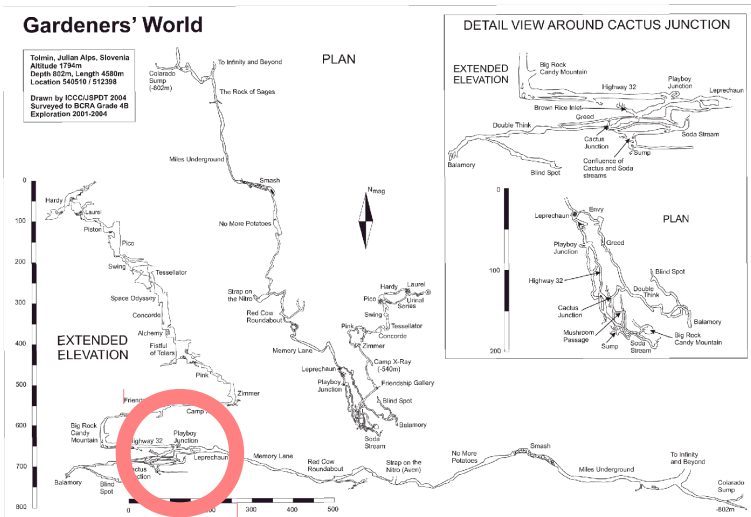


Classic 'Welsh' Caving at -800m

Gardeners' World

Tolmin, Julian Alps, Slovenia
 Altitude 1744m
 Depth 802m, Length 4500m
 Location 540510 / 512398
 Drawn by ICCU/SPOT 2004
 Surveyed by SIGRA Grade 4B
 Exploration 2001-2004

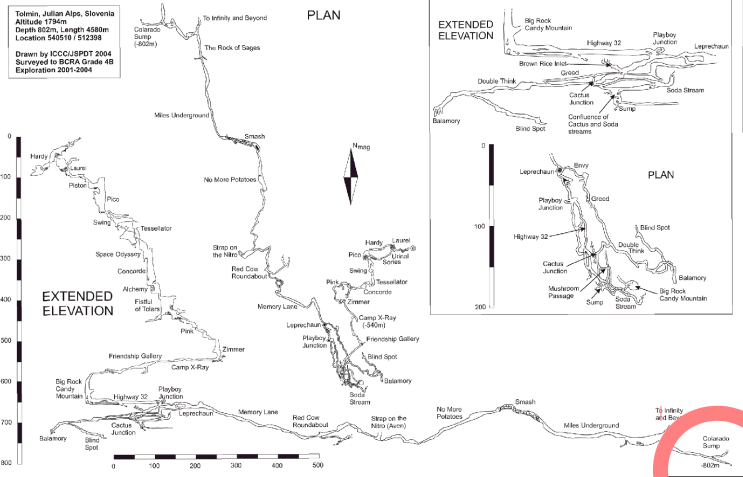




2004 Camp “The Fridge” (-700m)



Gardeners' World



Colarado Sump – The End?



Vodna Sled

A photograph of a person in silhouette, wearing a backpack and a hat, standing in a cave. The person is looking towards a large, flat, blue-tinted ice formation on the cave floor. The cave walls are rocky and textured. The lighting is dramatic, with the person and the ice formation being the main points of focus.

Migovec 2010















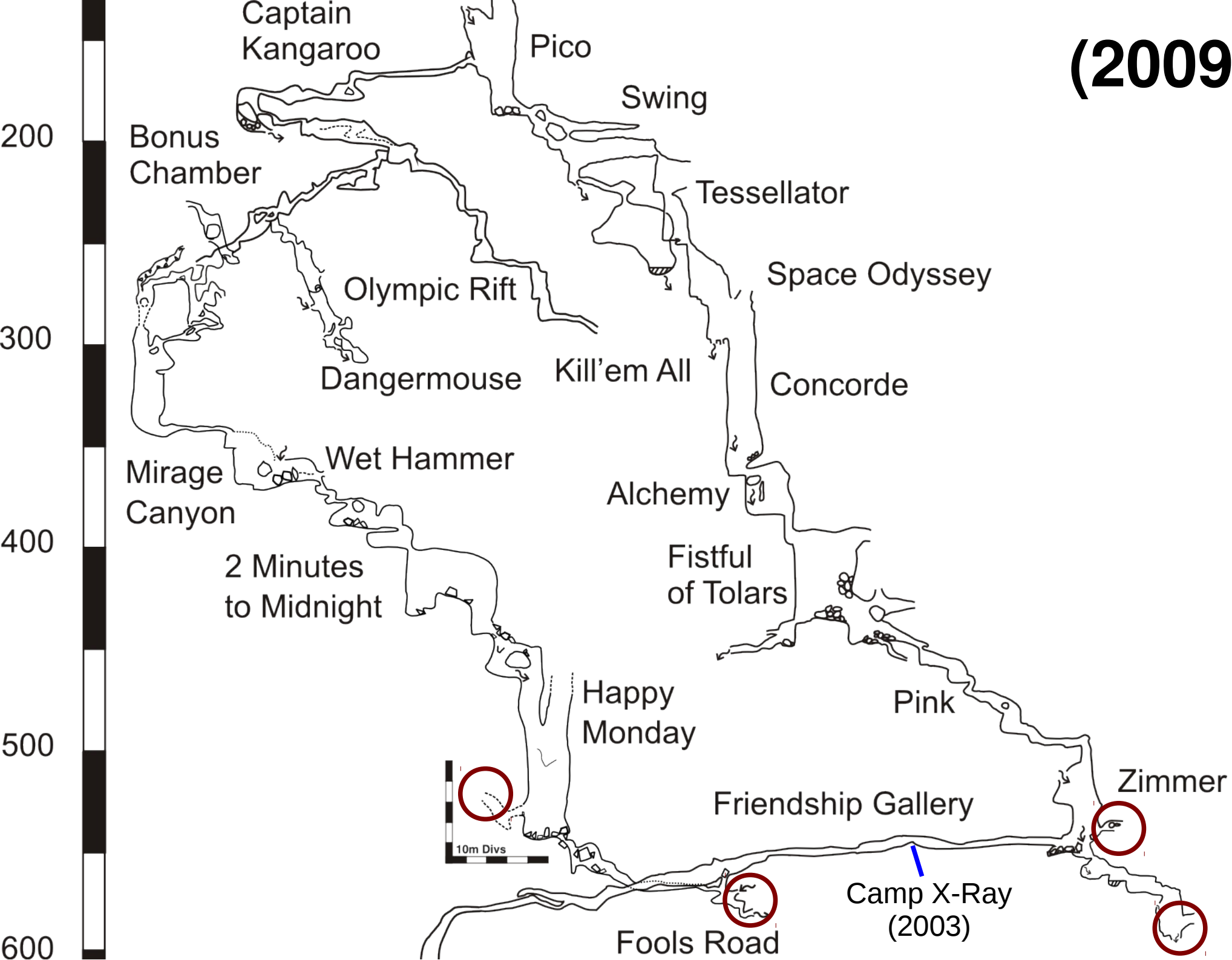








(2009)





2003 Camp X-Ray (-539m)













Zimmer (-543m)

Tolminska Korita





Eggstravaganza (-555m)









**Black Knight
Brezno**



**Black Knight
Siphon**





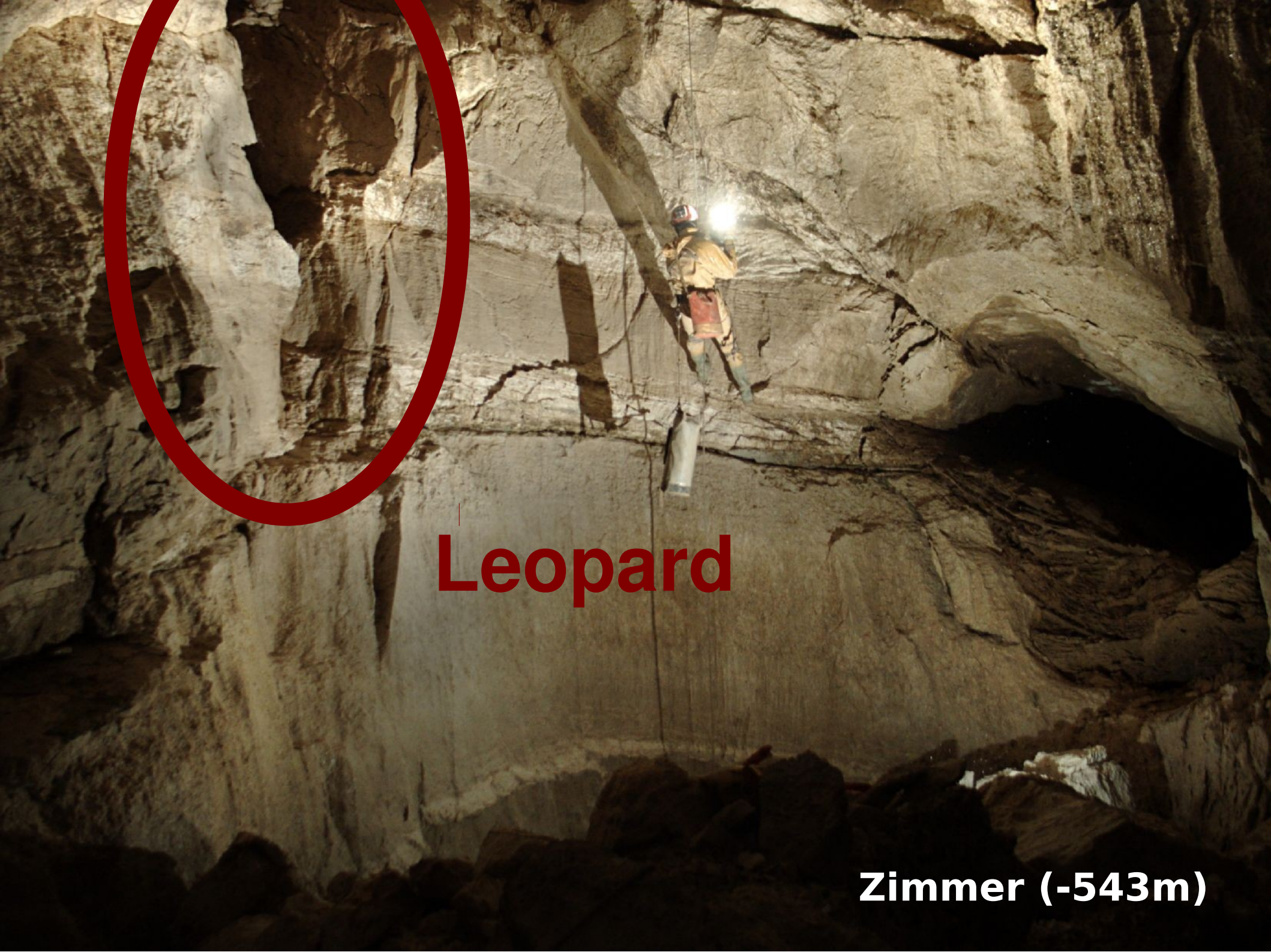


Connection to Envy

**(Sidewinder,
The Crack in Time)**







Leopard

Zimmer (-543m)













(Nikolas Kral)



(Nikolas Kral)



Prince Consort Rd



The Albert Hall





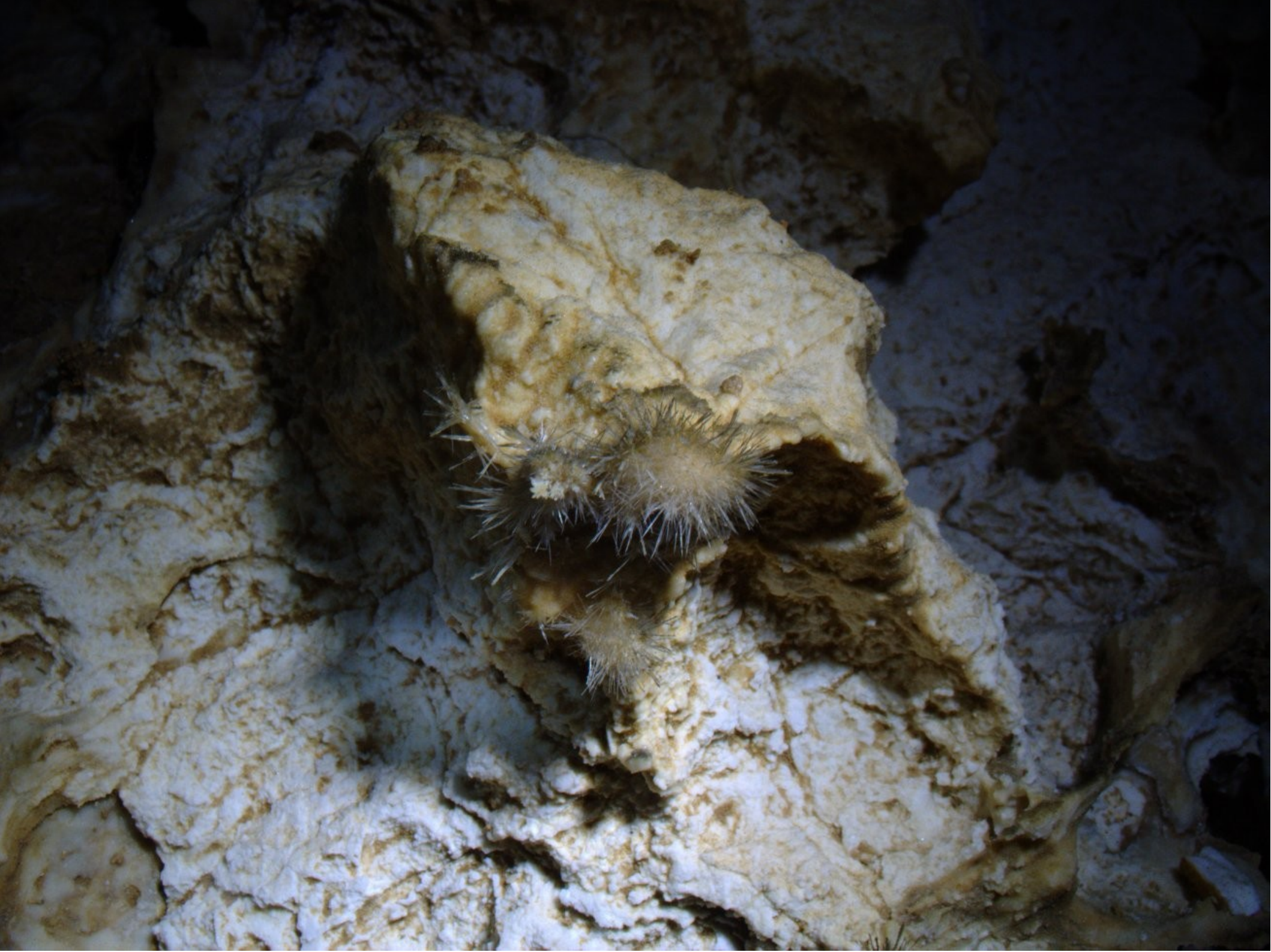




The Palace of King Minos

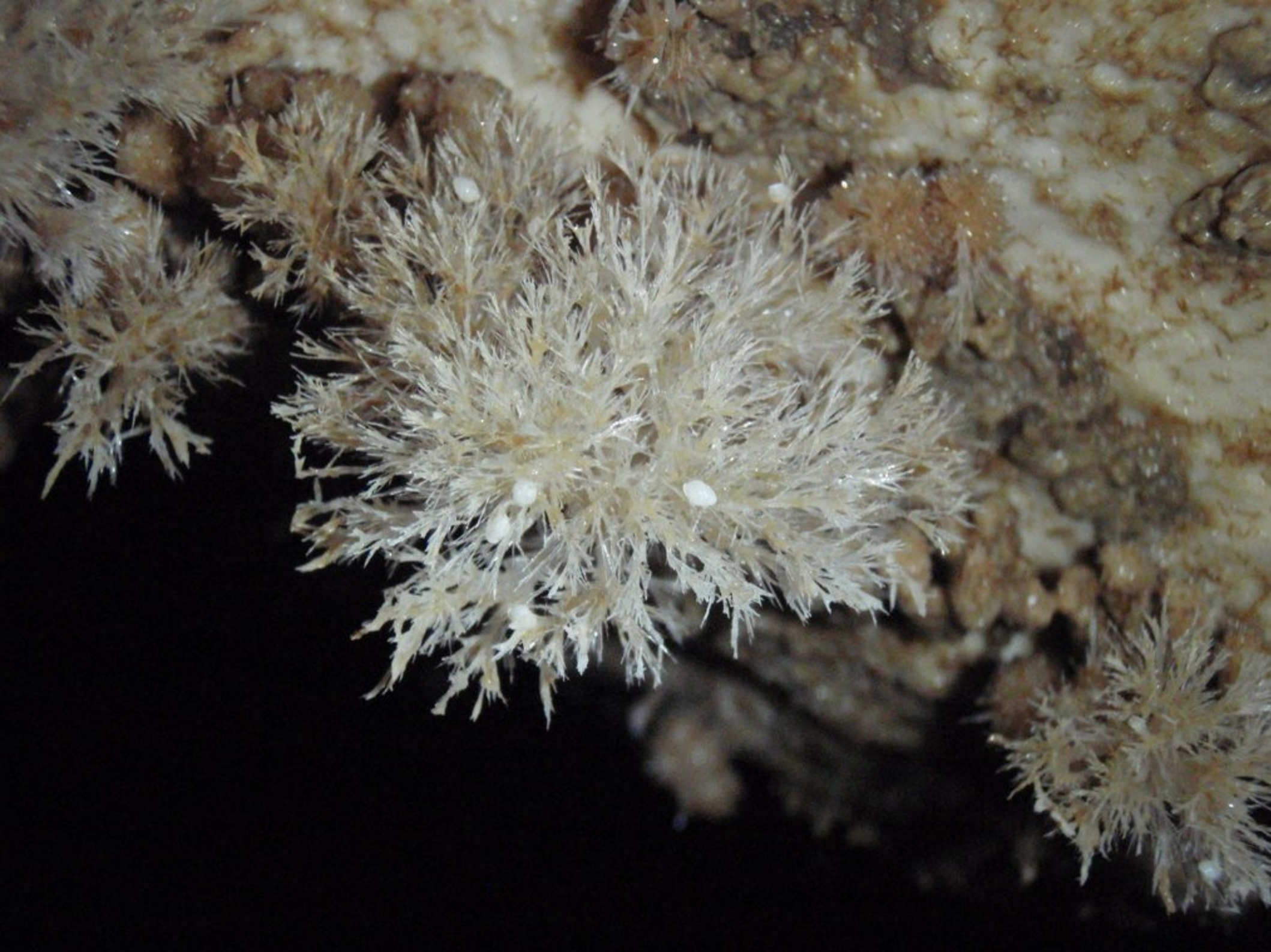






















**Minotaur
Rift**











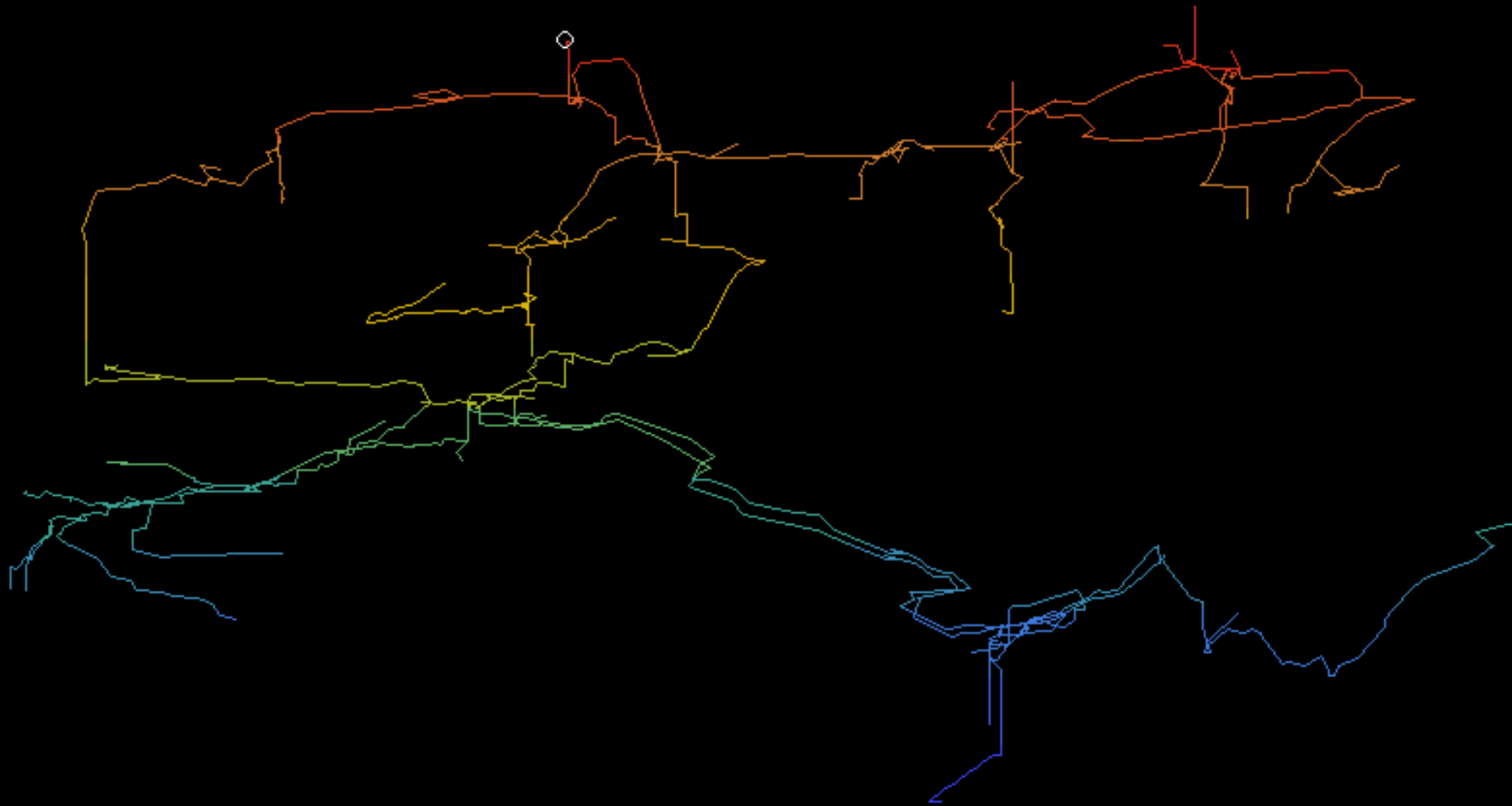






The Queen's Bed Chamber

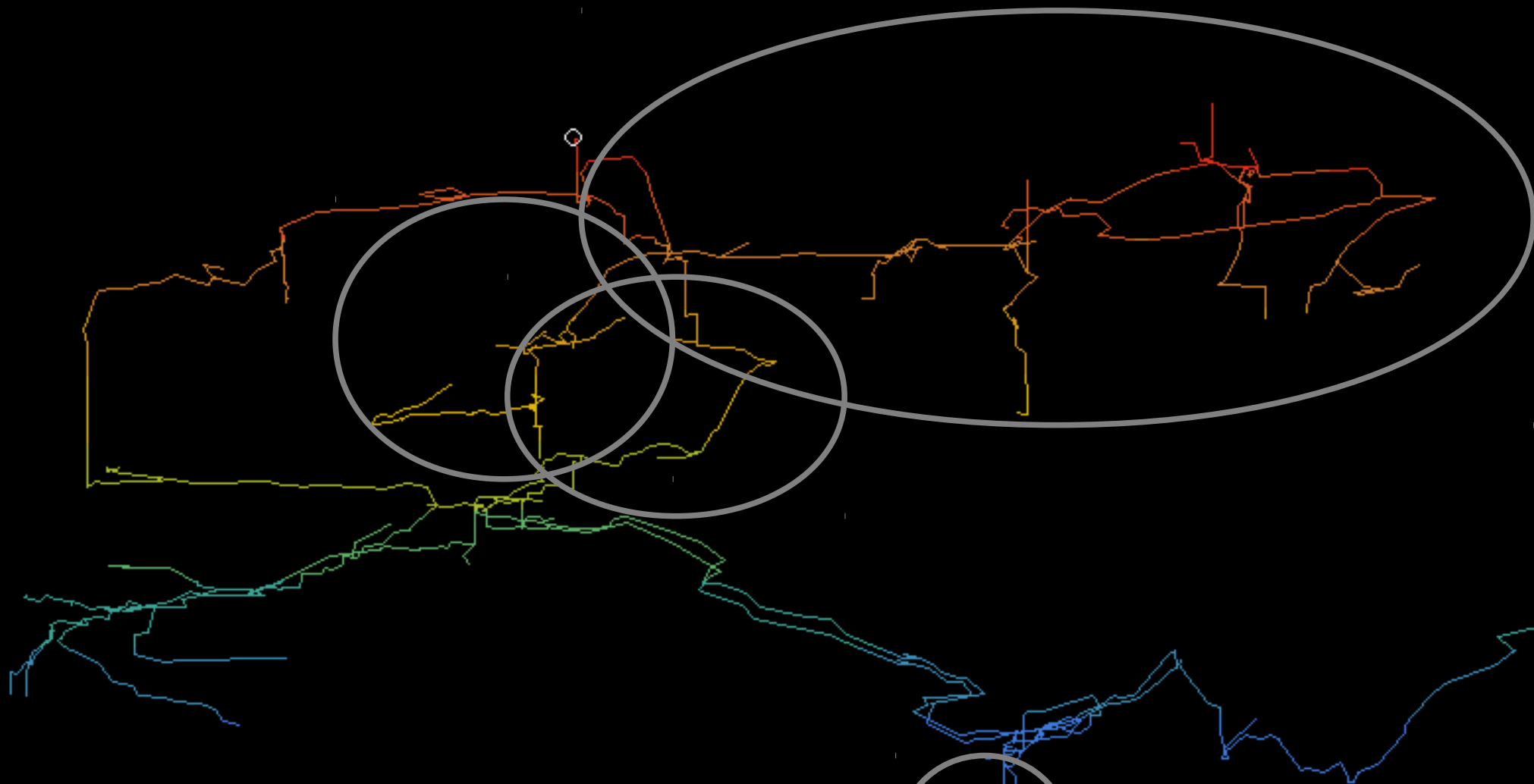
Vrtnarija Below -500m



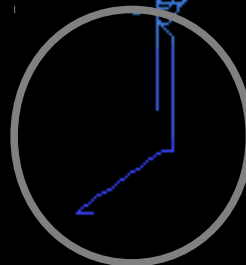
0

500m

Vrtnarija Below -500m



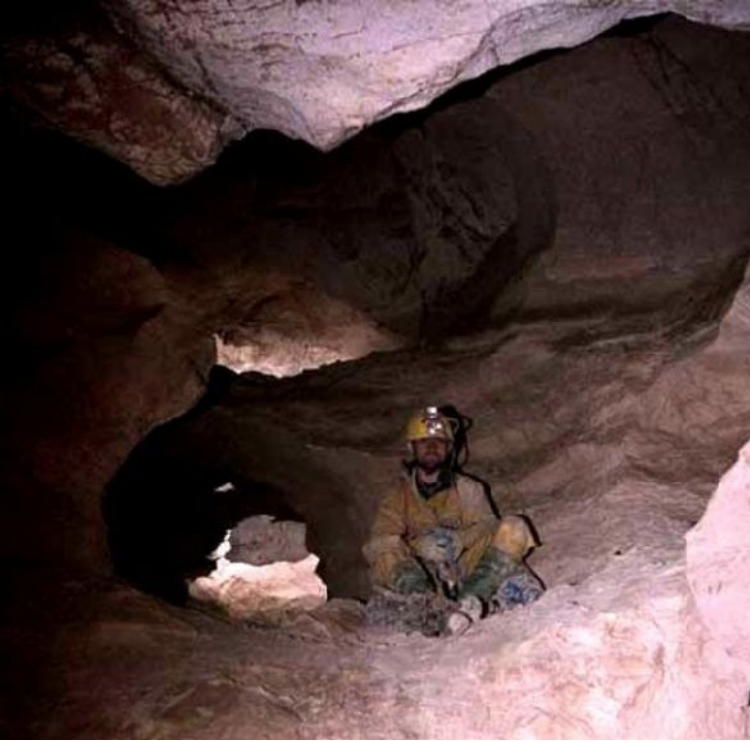
2,2km v letu 2010



500m

0

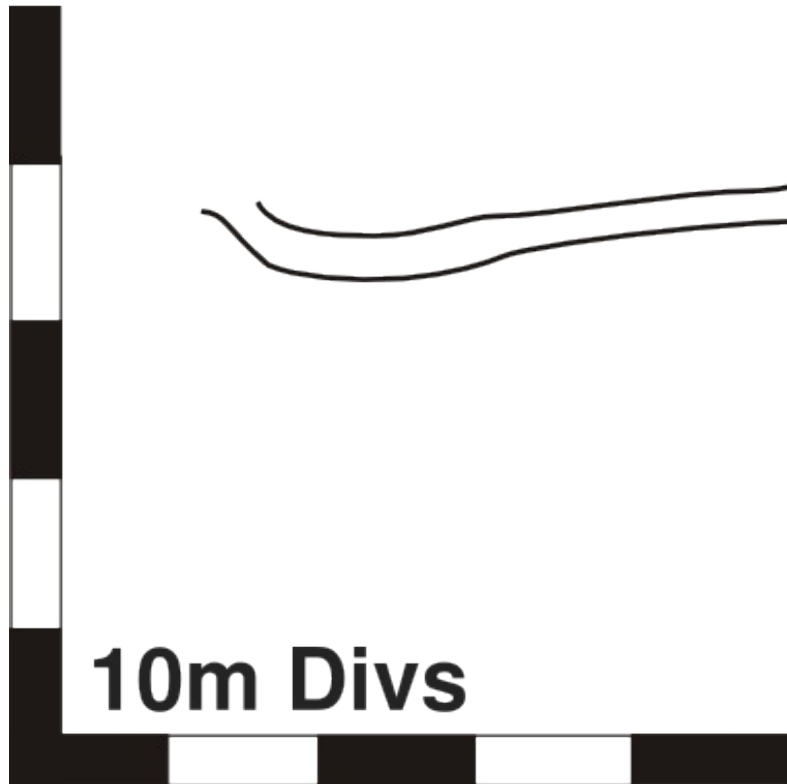




2009: 'Republica Palma de Coco'

2010: 'Insomnia'

**58m vertical extension
(4m more needed to be
deepest part of cave)**

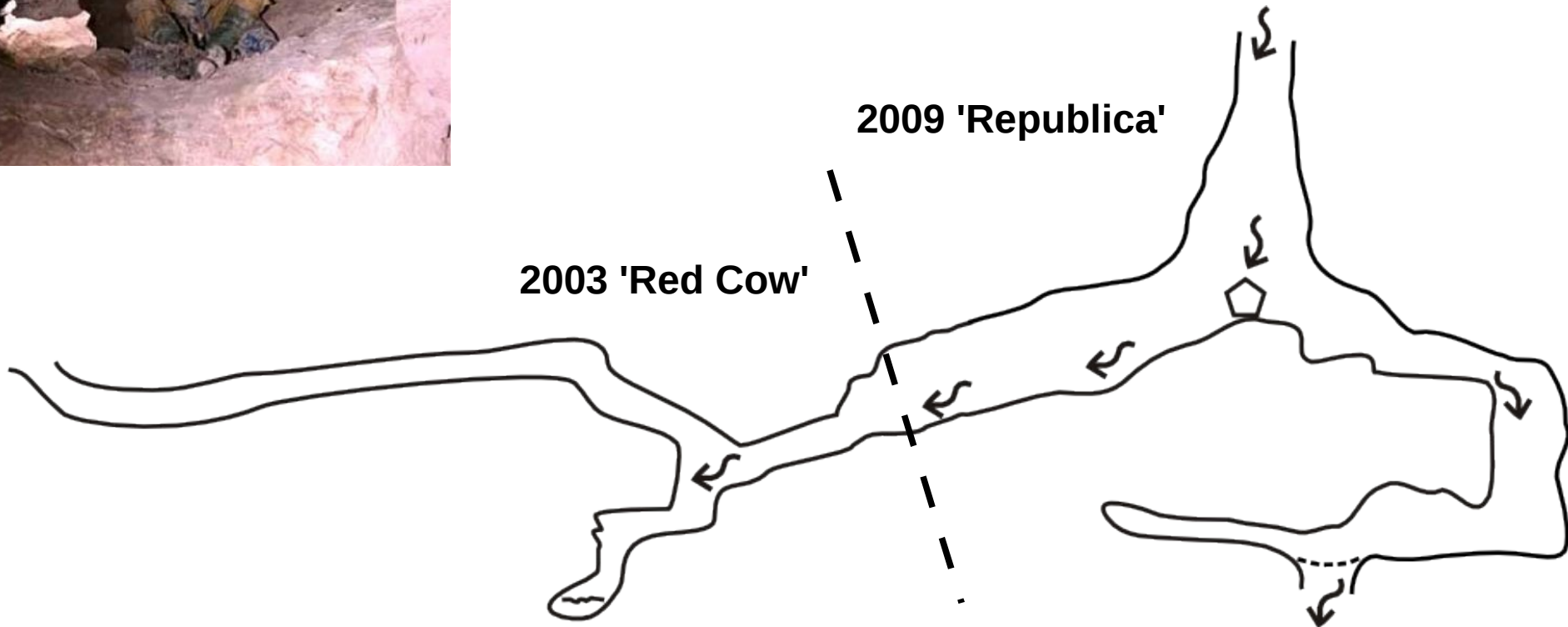


2003 'Red Cow'

2009 'Republica'

**Downstream
Sump (perched)**

**Can see 30-odd
metres down
rift + cascades**

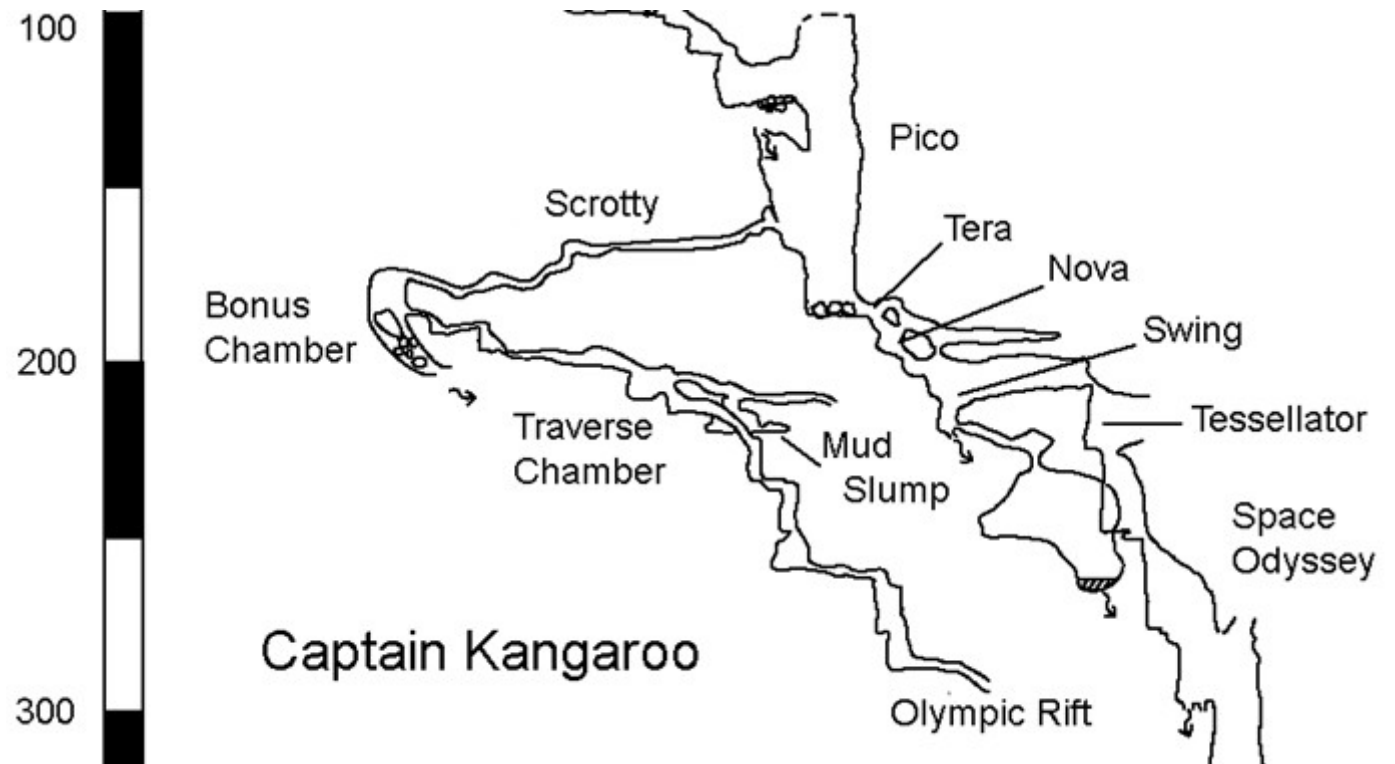


2005-2008

Possible connection?

Vrtnarija → Kavkna Jama (M2)

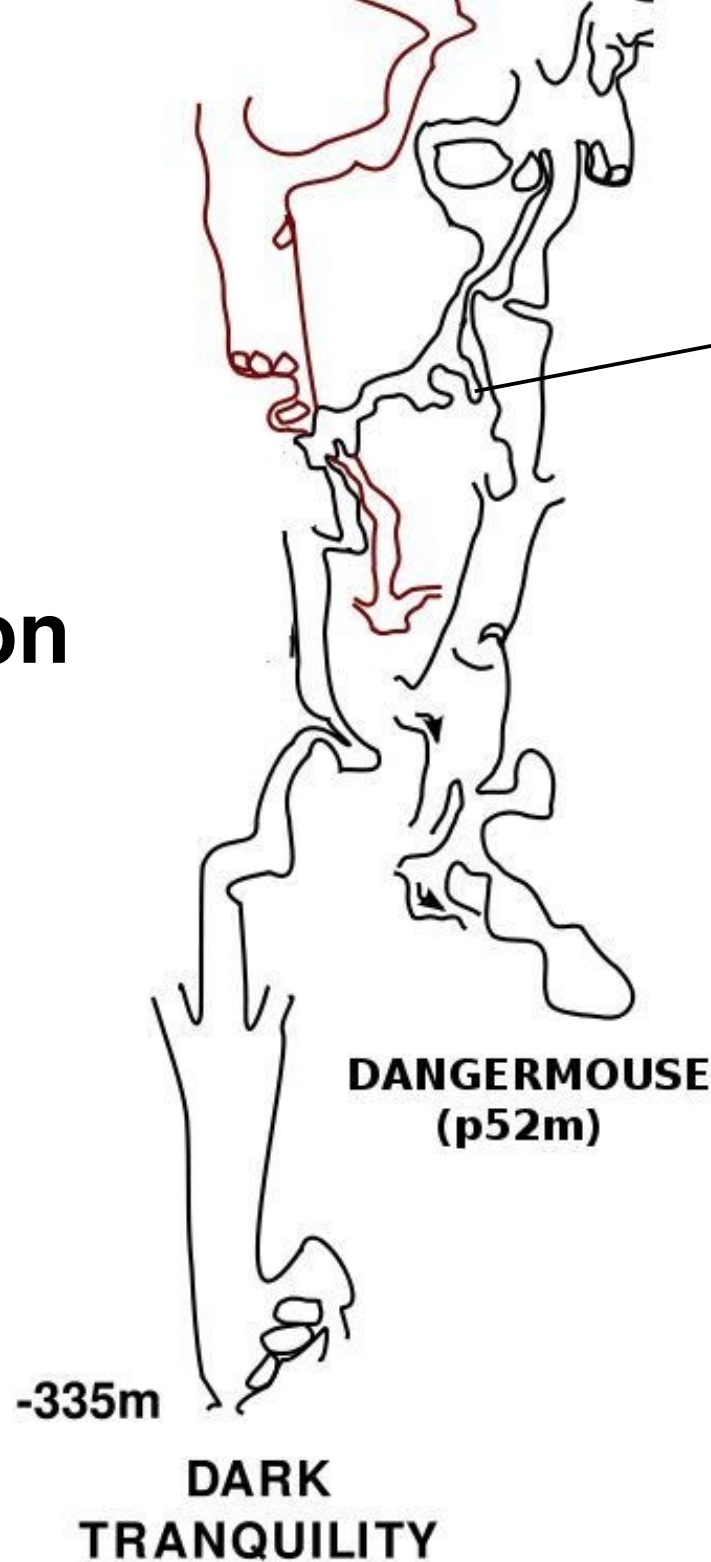
Sistem Migovec would become 2nd longest in Slovenia.



M2 (RED)

**Less than
50m Separation**

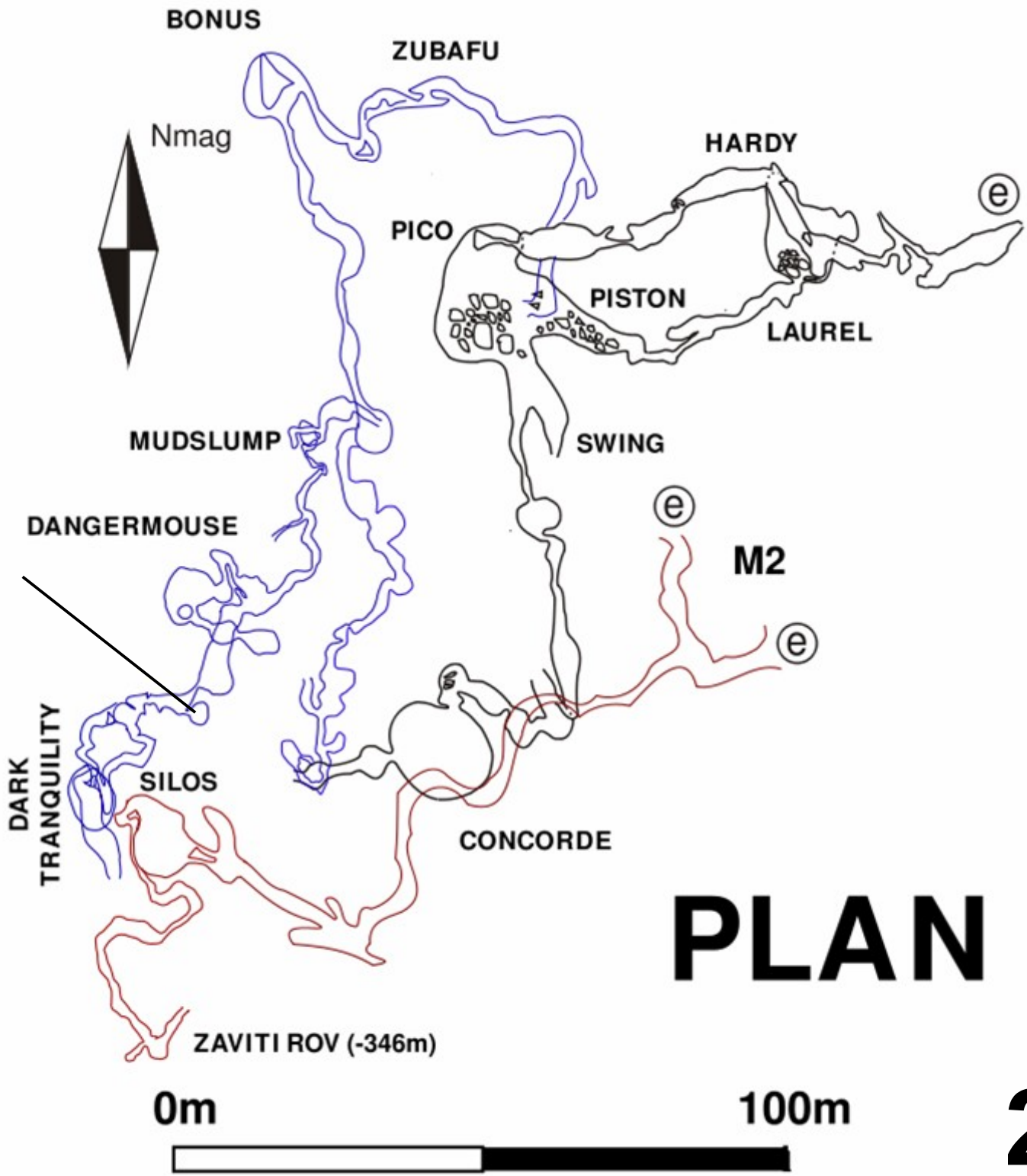
**Metal Camp
(2009)**



**Captain
Kangaroo
(Vrtnarija)**

2008

**Metal Camp
(2009)**



PLAN

2008







Jamarska Statistika

**Sistem Vrtnarija: Sedaj 8.775km (vs. 6.535km 2009)
7 najdaljsa in 12 najgloblja jama v Sloveniji**

Sistem Migovec: 2007 – 11.300km, 5 najdaljsa

Skupaj: dolzina 20.075km / globina 970m

**Postojnska Jama je 20.570km dolga – v 2011
potrebujemo odkriti le še dodatnih 500m → plus
povezava in Migovec postane najdaljsi jamski sistem
v Sloveniji.**

**Ce povezava uspe, potem postane Vrtnarija globlja
(Jama M2 lezi visje) in z dodatnimi 120m dosežemo
-1000m.**

**Many thanks to:
JSPDT & PDT
Zdenko Rejec
Andrej Fratnik
Skalarjevi (Ravne)**

**Photo Credits (2010):
Jana Čarga
Iztok Mozir 'Izi'
Nikolas Kral
Martin McGowan
Jarvist Frost**

